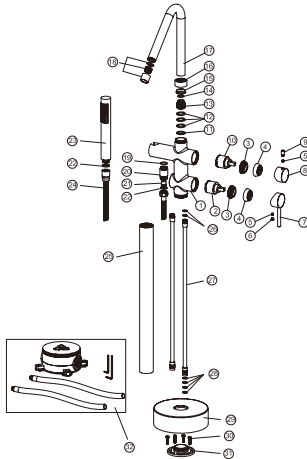


# PRODUCT INFORMATION SUMMARY



Ref.	EAN	Finish
BEECO1	8435668005227	Chrome
BEECO1BGM	8435668031851	Black gun metal
BEECO1NG	8435668005234	Matte black
BEECO1ORC	8435668031875	Brushed rose gold
BEECO1OC	8435668031868	Brushed gold

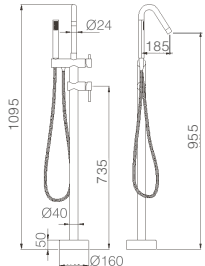
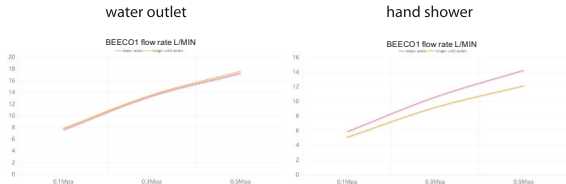


CODE	NAME	MATERIAL	REF	CODE	NAME	MATERIAL	REF
1	Valve body	Brass		19	O-ring	NBR	
2	Cartridge	35mm	CRT006*	20	Connect	Brass	
3	Cartridge locknut	Brass		21	Throttle check valve	Plastic	
4	Trim cap	Brass		22	Rubber washer	EPDM	
5	Set screw	SUS 304		23	Hand shower	ABS/ Brass	
6	Button	ABS		24	Shower flexible hose	SUS 304	
7	Handle	Zinc		25	Straight pipe	SUS 304	
8	Diverter knob	Zinc		26	O-ring	NBR	
9	Handle lever	Brass		27	Water inlet straight pipe	Brass	
10	Diverter	35mm	CRT065*	28	O-ring	NBR	
11	Protective ring	Plastic		29	Decorative cover	SUS 304	
12	O-ring	NBR		30	Set screw	SUS 304	
13	Connect	Brass		31	Connecting seat	SUS 304	
14	O-ring	NBR		32	Embedded box kit	SUS 304	
15	Protective ring	Plastic					
16	Nut	Brass					
17	Tub spout	Brass					
18	Perlator	SUS 304	SAT-AIR021*				

\* CONSULTAR PARA ACABADOS DE COLOR

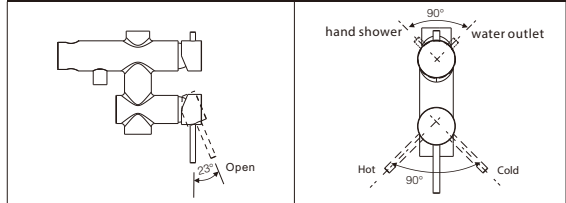
## FLOW RATE

Detalles	
FLOW RATE REF	BEECO1
water outlet mixer water 0.1Mpa(L/MIN)	7.6
water outlet mixer water 0.3Mpa(L/MIN)	13.38
water outlet mixer water 0.5Mpa(L/MIN)	17.25
water outlet singer cold water 0.1Mpa(L/MIN)	7.85
water outlet singer cold water 0.3Mpa(L/MIN)	13.59
water outlet singer cold water 0.5Mpa(L/MIN)	17.61
hand shower mixer water 0.1Mpa(L/MIN)	5.87
hand shower mixer water 0.3Mpa(L/MIN)	10.62
hand shower mixer water 0.5Mpa(L/MIN)	14.27
hand shower singer cold water 0.1Mpa(L/MIN)	5.12
hand shower singer cold water 0.3Mpa(L/MIN)	9.2
hand shower singer cold water 0.5Mpa(L/MIN)	12.15



Product sizes (cm)	86.5*32.5*8.8
Weight (kg)	5.5
Guarantee	5 years
Max Preassure (bar)	5
Min Preassure (bar)	0.5
Optimum preassure (bar)	1-4 (Recommended 3)
Max. temperature	85°C
Min temperature	65°C

## Usage function instruction

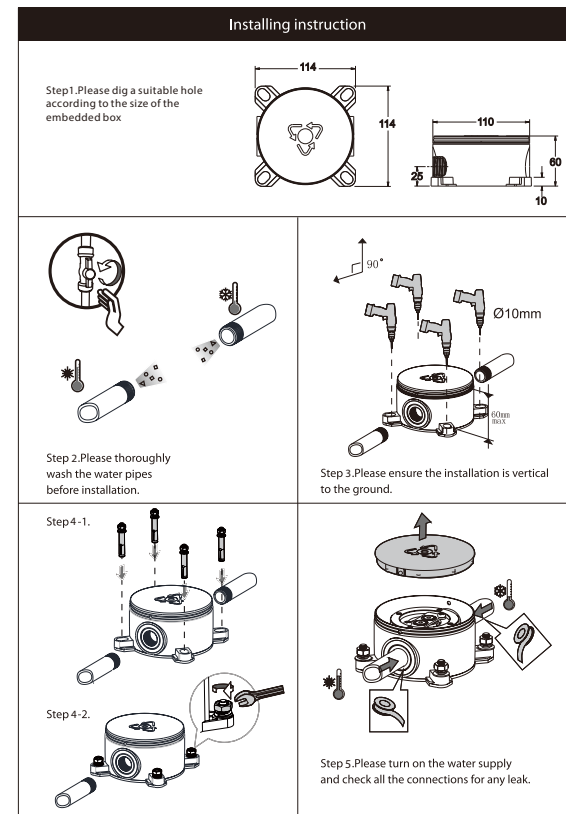




## BÉLGICA

Series

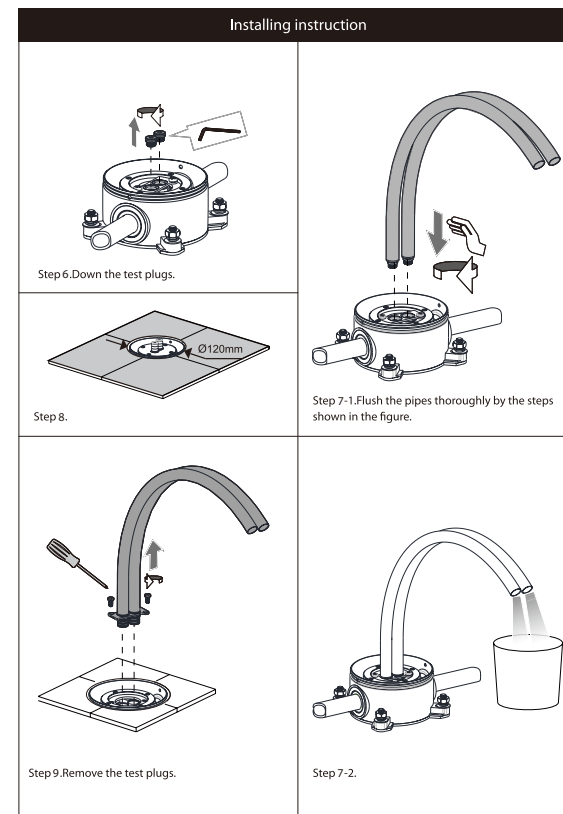
IMEX  
BATH EQUIPMENTS



## BÉLGICA

Series

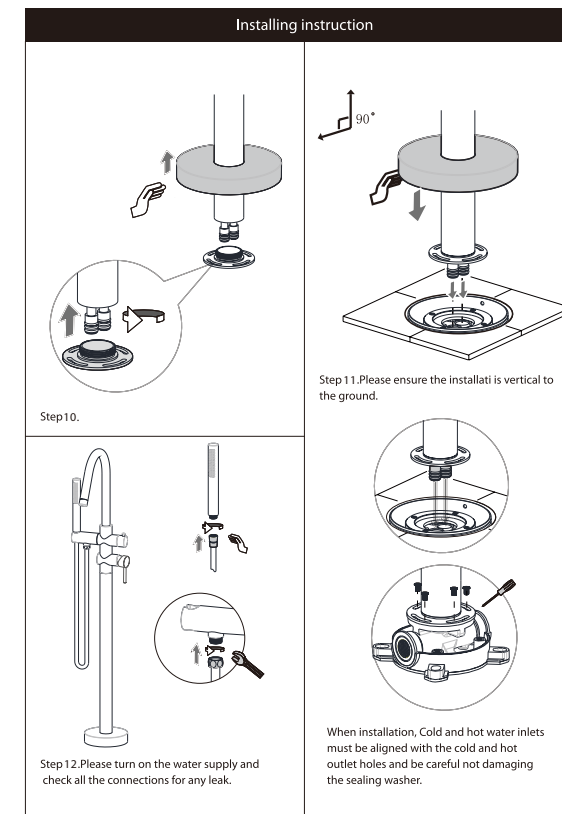
IMEX  
BATH EQUIPMENTS



## BÉLGICA

Series

IMEX  
BATH EQUIPMENTS



### CERTIFIES

That all our products, provided that they are used in normal conditions or installed in accordance with current standards, are guaranteed against any manufacturing defect for a period of five years, except for products purchased before January 1, 2020, which will have the mand atory coverage of 2 years from the date of invoice.

### Requirements and exclusions

Failure to comply with the instructions for assembly, use and maintenance of our products on the packaging and in our catalogue and published on our website: [www.imexproducts.es](http://www.imexproducts.es), releases IMEX PRODUCTS, S.L. from any liability.

In any case, the acceptance of the defect by our technical department is necessary. In addition, transport costs will be charged only in the event that on IMEX PRODUCTS, S.L. technician determines the proper functioning of our products.

IMEX PRODUCTS, S.L. will decide to repair the product or replace it. It will be necessary to present the purchase invoice.

Assembly, maintenance or repairs carried out by non-specoalists re excluded from the warranty.

Wearing parts such as hoses, handles, seals, filters, aerators, etc. are not covered by the warranty.