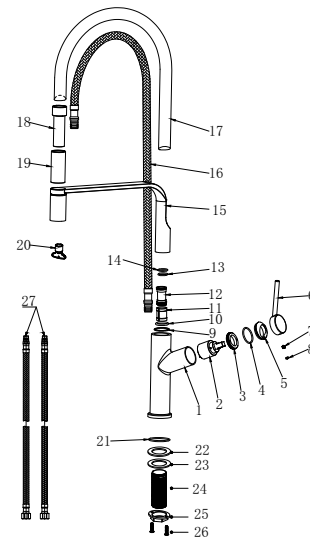


PRODUCT INFORMATION SUMMARY



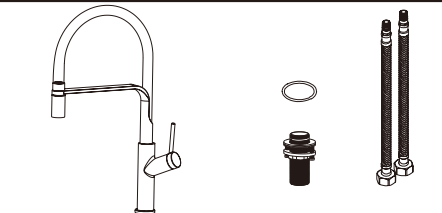
Ref.	EAN	Finish
GCE022	8435668024792	Chrome
GCR022/BGM	8435668024808	Black gun metal
GCR022/NG	8435668024815	Matte black
GCR022/ORC	8435668024839	Brushed rose gold
GCR022/OC	8435668024822	Brushed gold



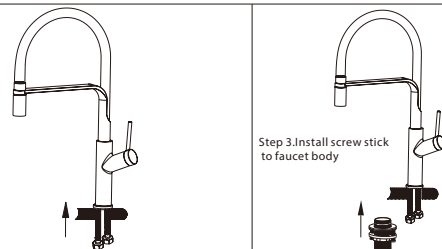
CODE	NAME	MATERIAL	REF	CODE	NAME	MATERIAL	REF
1	Body	Brass		15	Rocker	SUS 304	
2	Cartridge	25mm up	CRT022*	16	Pipe	SUS 304 / PVC	
3	Nut	Brass		17	Pipe	Silicone	
4	O-ring	NBR		18	Connect	Brass	
5	Cover	Brass		19	Shower	Brass	SAT-DF049*
6	Handle	Zinc		20	Aerator spanner	Plastic	
7	Screw	SUS 304		21	O-ring	NBR	
8	Buttom	ABS		22	Washer	NBR	
9	Washer	POM		23	Metal washer	SUS 304	
10	O-ring	NBR		24	Lock screw	SUS 304	
11	Washer	POM		25	Nut	Brass	
12	Connect	Brass		26	Screw	SUS 304	
13	O-ring	NBR		27	Pipe	SUS 304 / PVC	
14	O-ring	NBR					

* CONSULTAR PARA ACABADOS DE COLOR

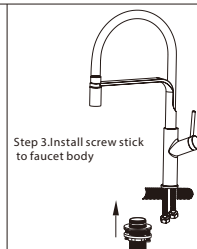
Installing instruction



Step 1. Check all spare parts ready

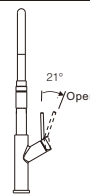


Step 2. Install inlet pipe to faucet body

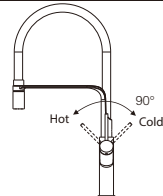


Step 3. Install screw stick to faucet body

Usage function instruction



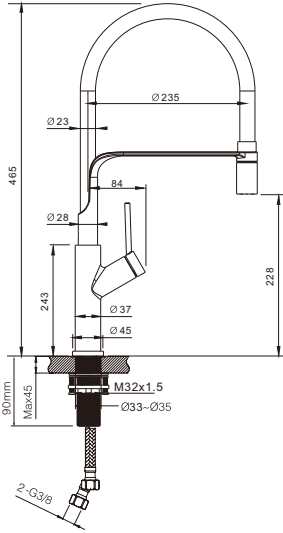
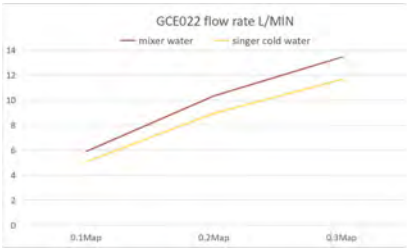
21° Open



Hot 90° Cold

FLOW RATE

Detalles	
FLOW RATE REF	GCE022
mixer water 0.1Mpa(L/MIN)	5.89
mixer water 0.3Mpa(L/MIN)	10.33
mixer water 0.5Mpa(L/MIN)	13.43
singer cold water 0.1Mpa(L/MIN)	5.06
singer cold water 0.3Mpa(L/MIN)	8.94
singer cold water 0.5Mpa(L/MIN)	11.64



Product sizes (cm)	51.5*29*6.5
Weight (kg)	1.38
Guarantee	5 years
Max Preassure (bar)	5
Min Preassure (bar)	0.5
Optimum preassure (bar)	1-4 (Recommended 3)
Max. temperature	85°C
Min temperature	65°C

CERTIFIES

That all our products, provided that they are used in normal conditions or installed in accordance with current standards, are guaranteed against any manufacturing defect for a period of five years, except for products purchased before January 1, 2020, which will have the mand atory coverage of 2 years from the date of invoice.

Requirements and exclusions

Failure to comply with the instructions for assembly, use and maintenance of our products on the packaging and in our catalogue and published on our website: www.imexproducts.es, releases IMEX PRODUCTS, S.L. from any liability.

In any case, the acceptance of the defect by our technical department is necessary. In addition, transport costs will be charged only in the event that on IMEX PRODUCTS, S.L. technician determines the proper functioning of our products.

IMEX PRODUCTS, S.L. will decide to repair the product or replace it. It will be necessary to present the purchase invoice.

Assembly, maintenance or repairs carried out by non-specoalists re excluded from the warranty.

Wearing parts such as hoses, handles, seals, filters, aerators, etc. are not covered by the warranty.

