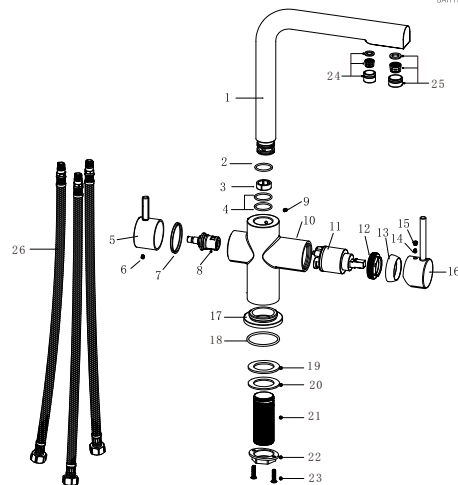


PRODUCT INFORMATION SUMMARY



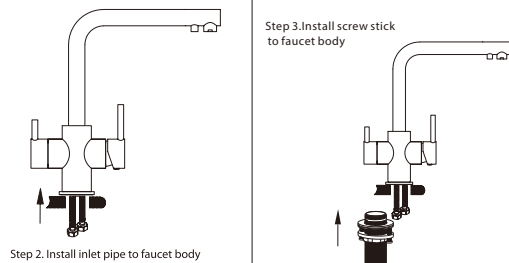
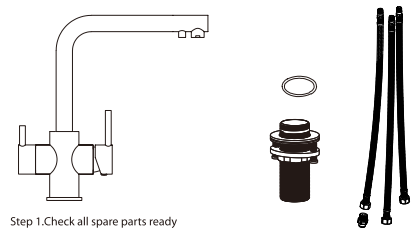
Ref.	EAN	Finish
GOS004	8435668003186	Chrome
GOS004/NG	8435668003193	Matte black



CODE	NAME	MATERIAL	REF	CODE	NAME	MATERIAL	REF
1	Pipe	Brass		15	Bottom	ABS	
2	O-ring	NBR		16	Handle	Zinc	
3	Washer	POM		17	Base	Brass	
4	O-ring	NBR		18	O-ring	NBR	
5	Handle	Zinc		19	Washer	NBR	
6	Screw	SUS 304		20	Metal washer	SUS 304	
7	Washer	POM		21	Lock screw	SUS 304	
8	Cartridge	21mm	SAT-MON002*	22	Nut	Brass	
9	Screw	SUS 304		23	Screw	SUS 304	
10	Body	Brass		24	PERLATOR OSMOSIS	SUS 304	SAT-AIR014*
11	Cartridge	35mm	CTR003	25	Perlator	SUS 304	RR0003*
12	Nut	Brass		26	Pipe	SUS 304 / PVC	
13	Cover	Brass					
14	Screw	SUS 304					

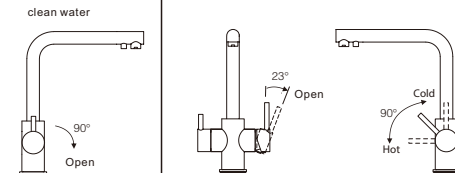
* CONSULTAR PARA ACABADOS DE COLOR

Installing instruction

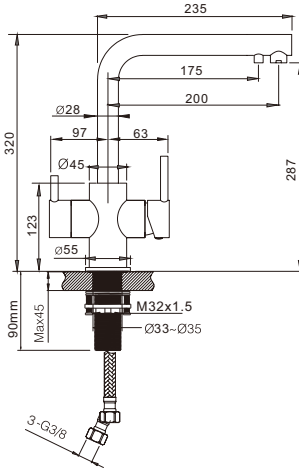
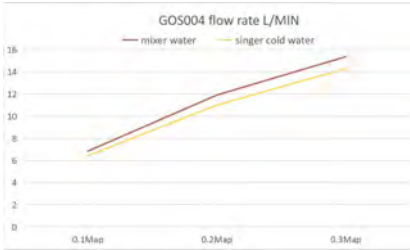


Step 3. Install screw stick to faucet body

Usage function instruction



FLOW RATE	
Detalles	
FLOW RATE REF	GOS004
mixer water 0.1Mpa(L/MIN)	6.84
mixer water 0.3Mpa(L/MIN)	11.9
mixer water 0.5Mpa(L/MIN)	15.37
singer cold water 0.1Mpa(L/MIN)	6.42
singer cold water 0.3Mpa(L/MIN)	11
singer cold water 0.5Mpa(L/MIN)	14.3



Product sizes (cm)	49*24.5*5.9
Weight (kg)	1.75
Guarantee	5 years
Max Preassure (bar)	5
Min Preassure (bar)	0.5
Optimum preassure (bar)	1-4 (Recommended 3)
Max. temperature	85°C
Min temperature	65°C

CERTIFIES

That all our products, provided that they are used in normal conditions or installed in accordance with current standards, are guaranteed against any manufacturing defect for a period of five years, except for products purchased before January 1, 2020, which will have the mand atory coverage of 2 years from the date of invoice.

Requirements and exclusions

Failure to comply with the instructions for assembly, use and maintenance of our products on the packaging and in our catalogue and published on our website: www.imexproducts.es, releases IMEX PRODUCTS, S.L. from any liability.

In any case, the acceptance of the defect by our technical department is necessary. In addition, transport costs will be charged only in the event that on IMEX PRODUCTS, S.L. technician determines the proper functioning of our products.

IMEX PRODUCTS, S.L. will decide to repair the product or replace it. It will be necessary to present the purchase invoice.

Assemnly, maintenance or repairs carried out by non-specoalists re excluded from the warranty.

Wearing parts such as hoses, handles, seals, filters, aerators, etc. are not covered by the warranty.

