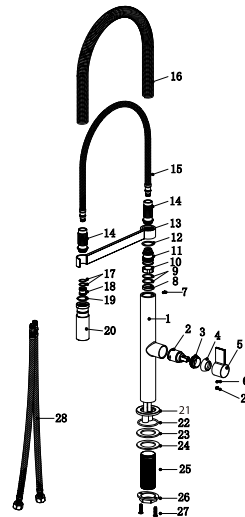


PRODUCT INFORMATION SUMMARY



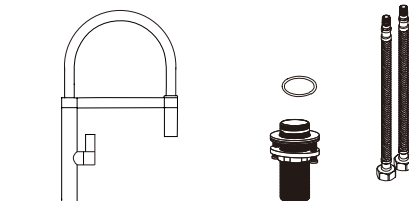
Ref.	EAN	Finish
GCE011	8435668003131	Chrome
GCE012	8435668003148	Matte black
GCE014	8435668003155	Matt White



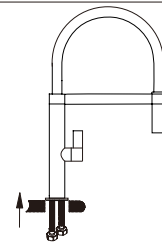
CODE	NAME	MATERIAL	REF	CODE	NAME	MATERIAL	REF
1	Body	Brass		16	Pipe	SUS304/Silicone	
2	Cartridge	25mm up	CRT027*	17	O-ring	NBR	
3	Nut	Brass		18	Connect	Brass	
4	Cover	Brass		19	O-ring	NBR	
5	Handle	Zinc		20	Shower	Brass	SAT-DF010*
6	Screw	SUS 304		21	Base	Brass	
7	Screw	SUS 304		22	O-ring	NBR	
8	Washer	POM		23	Washer	NBR	
9	O-ring	NBR		24	Metal washer	SUS 304	
10	Washer	POM		25	Lock screw	SUS 304	
11	Connect	Brass		26	Nut	Brass	
12	Washer	POM		27	Screw	SUS 304	
13	Rocker	Zinc		28	Pipe	SUS 304 / PVC	
14	Connect	Brass		29	bottom	ABS	
15	Pipe	SUS 304 / PVC					

* CONSULTAR PARA ACABADOS DE COLOR

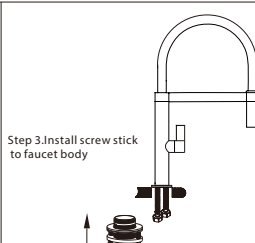
Installing instruction



Step 1. Check all spare parts ready

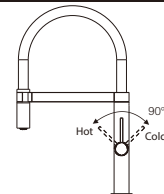
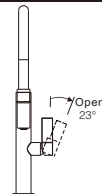


Step 2. Install inlet pipe to faucet body

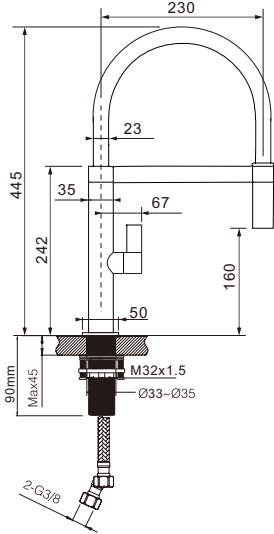


Step 3. Install screw stick to faucet body

Usage function instruction



FLOW RATE	
Detalles	
FLOW RATE REF	GCE011/GCE012/GCE014
mixer water 0.1Mpa(L/MIN)	4.78
mixer water 0.3Mpa(L/MIN)	8.53
mixer water 0.5Mpa(L/MIN)	11
singer cold water 0.1Mpa(L/MIN)	4.09
singer cold water 0.3Mpa(L/MIN)	7.25
singer cold water 0.5Mpa(L/MIN)	9.4



Product sizes (cm)	60*31.5*7.5
Weight (kg)	1.55
Guarantee	5 years
Max Preassure (bar)	5
Min Preassure (bar)	0.5
Optimum preassure (bar)	1-4 (Recommended 3)
Max. temperature	85°C
Min temperature	65°C

CERTIFIES

That all our products, provided that they are used in normal conditions or installed in accordance with current standards, are guaranteed against any manufacturing defect for a period of five years, except for products purchased before January 1, 2020, which will have the mand atory coverage of 2 years from the date of invoice.

Requirements and exclusions

Failure to comply with the instructions for assembly, use and maintenance of our products on the packaging and in our catalogue and published on our website: www.imexproducts.es, releases IMEX PRODUCTS, S.L. from any liability.

In any case, the acceptance of the defect by our technical department is necessary. In addition, transport costs will be charged only in the event that on IMEX PRODUCTS, S.L. technician determines the proper functioning of our products.

IMEX PRODUCTS, S.L. will decide to repair the product or replace it. It will be necessary to present the purchase invoice.

Assemnly, maintenance or repairs carried out by non-specoalists re excluded from the warranty.

Wearing parts such as hoses, handles, seals, filters, aerators, etc. are not covered by the warranty.

