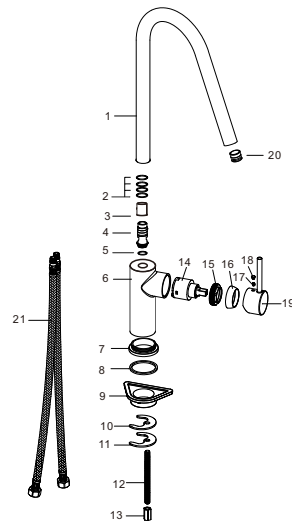


PRODUCT INFORMATION SUMMARY



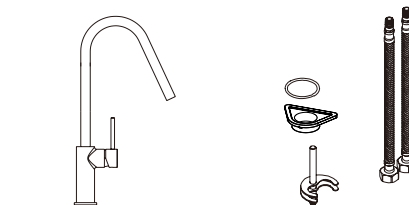
Ref.	EAN	Finish
GCE020	8435668013451	Chrome
GCE020/NG	8435668013543	Matte black
GCE020/ORC	8435668012607	Brushed rose gold
GCE020/OC	8435668012430	Brushed gold
GCE020/NQ	8435668013628	Brushed nickel



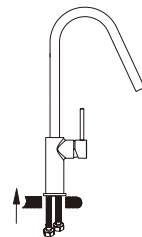
CODE	NAME	MATERIAL	REF	CODE	NAME	MATERIAL	REF
1	Pipe	SUS 304		15	Nut	Brass	
2	O-ring	NBR		16	decorative cup	SUS 304	
3	Washer	Pom		17	screw	SUS 304	
4	Connect	Brass		18	button	ABS	
5	O-ring	NBR		19	handle	zinc	
6	Body	Brass		20	aerator	plastic	SAT-AIR067*
7	Base	Brass		21	Connecting Pipe	TAQ-PEX-DN6-ACB H3/8-M10x1 L12-500-R&B	SAT-HOSE57*
8	O-ring	NBR					
9	Plastic base	Pom					
10	Rubber washer	NBR					
11	Metal washer	SUS 304					
12	M8-Screw	S5 304					
13	M8-Nut	brass					
14	Cartridge	35mm	CRT006*				

* CONSULTAR PARA ACABADOS DE COLOR

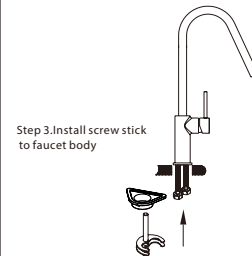
Installing instruction



Step 1. Check all spare parts ready

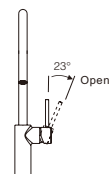


Step 2. Install inlet pipe to faucet body

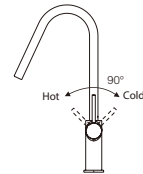


Step 3. Install screw stick to faucet body

Usage function instruction

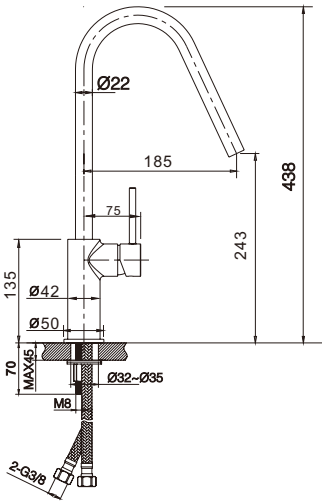
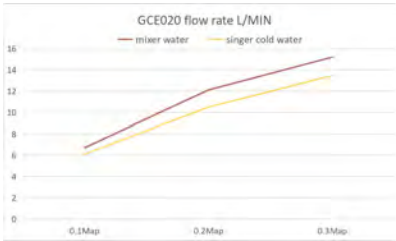


23° Open



Hot 90° Cold

FLOW RATE	
Detalles	
FLOW RATE REF	GCE020
mixer water 0.1Mpa(L/MIN)	6.7
mixer water 0.3Mpa(L/MIN)	12.1
mixer water 0.5Mpa(L/MIN)	15.2
singer cold water 0.1Mpa(L/MIN)	6.1
singer cold water 0.3Mpa(L/MIN)	10.48
singer cold water 0.5Mpa(L/MIN)	13.46



Product sizes (cm)	49*24.5*5.9
Weight (kg)	1.12
Guarantee	5 years
Max Preassure (bar)	5
Min Preassure (bar)	0.5
Optimum preassure (bar)	1-4 (Recommended 3)
Max. temperature	85°C
Min temperature	65°C

CERTIFIES

That all our products, provided that they are used in normal conditions or installed in accordance with current standards, are guaranteed against any manufacturing defect for a period of five years, except for products purchased before January 1, 2020, which will have the mand atory coverage of 2 years from the date of invoice.

Requirements and exclusions

Failure to comply with the instructions for assembly, use and maintenance of our products on the packaging and in our catalogue and published on our website: www.imexproducts.es, releases IMEX PRODUCTS, S.L. from any liability.

In any case, the acceptance of the defect by our technical department is necessary. In addition, transport costs will be charged only in the event that on IMEX PRODUCTS, S.L. technician determines the proper functioning of our products.

IMEX PRODUCTS, S.L. will decide to repair the product or replace it. It will be necessary to present the purchase invoice.

Assembly, maintenance or repairs carried out by non-specoalists re excluded from the warranty.

Wearing parts such as hoses, handles, seals, filters, aerators, etc. are not covered by the warranty.

