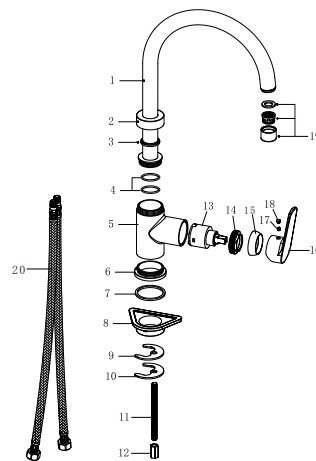


# PRODUCT INFORMATION SUMMARY



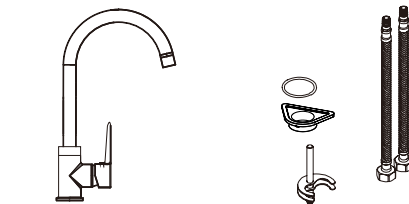
Ref.	EAN	Finish
GCZ044	8435668023047	Chrome
GCZ044/ NG	8435668023054	Matte black



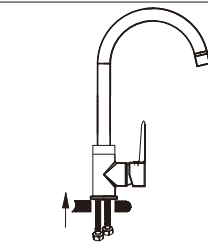
CODE	NAME	MATERIAL	REF	CODE	NAME	MATERIAL	REF
1	Pipe	SUS 304		15	decorative cup	SUS 304	
2	Nut	Brass		16	handle	zinc	
3	Washer	Pom		17	screw	SUS 304	
4	O-ring	NBR		18	button	ABS	
5	Body	Brass		19	Perlator	SUS 304	SAT-AIR021*
6	Base	Brass		20	Connecting Pipe	TAQ-PEX-DN6-ACE H3/8-M10X1 L12-500-R&B	SAT-HOSE57*
7	Washer	NBR					
8	Base	Pom					
9	Rubber washer	NBR					
10	Metal washer	SUS 304					
11	M8-Screw	SS 304					
12	M8-Nut	brass					
13	Cartridge	35mm	CRT006*				
14	Nut	Brass					

\* CONSULTAR PARA ACABADOS DE COLOR

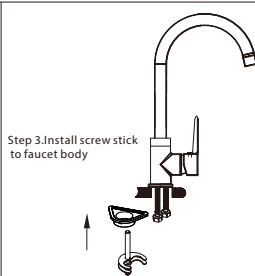
## Installing instruction



Step 1. Check all spare parts ready

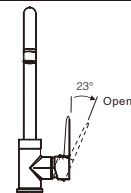


Step 2. Install inlet pipe to faucet body

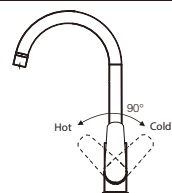


Step 3. Install screw stick to faucet body

## Usage function instruction

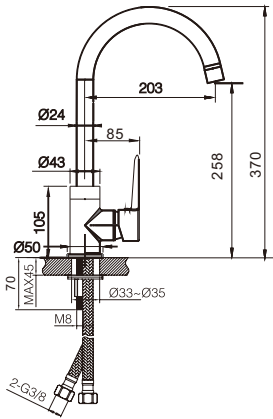
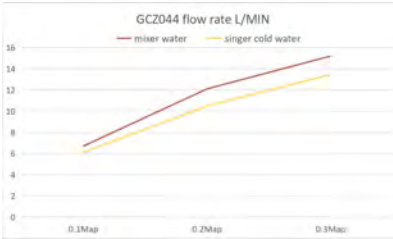


23° Open



Hot 90° Cold

FLOW RATE	
Detalles	
FLOW RATE REF	GCZ044
mixer water 0.1Mpa(L/MIN)	9.79
mixer water 0.3Mpa(L/MIN)	17
mixer water 0.5Mpa(L/MIN)	22
singer cold water 0.1Mpa(L/MIN)	8.27
singer cold water 0.3Mpa(L/MIN)	14.46
singer cold water 0.5Mpa(L/MIN)	18.81



Product sizes (cm)	42*24.5*5.9
Weight (kg)	0.93
Guarantee	5 years
Max Preasure (bar)	5
Min Preasure (bar)	0.5
Optimum preasure (bar)	1-4 (Recommended 3)
Max. temperature	85°C
Min temperature	65°C

CERTIFIES

That all our products, provided that they are used in normal conditions or installed in accordance with current standards, are guaranteed against any manufacturing defect for a period of five years, except for products purchased before January 1, 2020, which will have the mand atory coverage of 2 years from the date of invoice.

Requirements and exclusions

Failure to comply with the instructions for assembly, use and maintenance of our products on the packaging and in our catalogue and published on our website: [www.imexproducts.es](http://www.imexproducts.es), releases IMEX PRODUCTS, S.L. from any liability.

In any case, the acceptance of the defect by our technical department is necessary. In addition, transport costs will be charged only in the event that on IMEX PRODUCTS, S.L. technician determines the proper functioning of our products.

IMEX PRODUCTS, S.L. will decide to repair the product or replace it. It will be necessary to present the purchase invoice.

Assemnly, maintenance or repairs carried out by non-specoalists re excluded from the warranty.

Wearing parts such as hoses, handles, seals, filters, aerators, etc. are not covered by the warranty.

