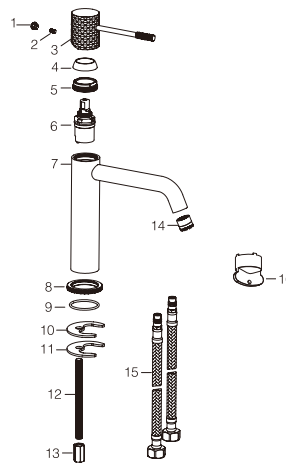


**PRODUCT  
INFORMATION  
SUMMARY**



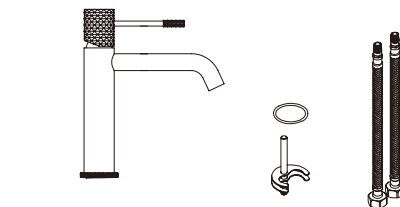
Ref.	EAN	Finish
BDG053-1	8435668034104	Chrome
BDG053-1BGM	8435668034111	Black gun metal
BDG053-1NG	8435668034128	Matte black
BDG053-1ORC	8435668034142	Brushed rose gold
BDG053-1OC	8435668034135	Brushed gold
BDG053-1NQ	8435668059572	Brushed niquel



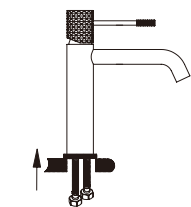
CODE	NAME	MATERIAL	REF
1	Button	ABS	
2	Screw	SUS 304	
3	Handle	Brass	
4	Decorative cap	ABS	
5	Nut	Brass	
6	Cartridge	26mm up	CRT096*
7	Body	Brass	
8	Base	Brass	
9	O-ring	NBR	
10	Rubber washer	NBR	
11	Metal plate	SUS 304	
12	M8-Screw	SUS 304	
13	M8-Nut	Brass	
14	Aerator	ABS/M16.5x1mm	SAT-AIR060*
15	Connecting Pipe	TAQ-PEX-DN6-ACB H3/8-M10X1 L12-500-R&B	SAT-HOSES7*
16	Aerator spanner	Plastic	

\* CONSULTAR PARA ACABADOS DE COLOR

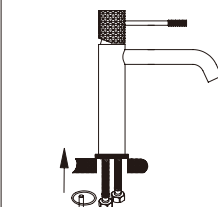
**Installing instruction**



Step 1. Check all spare parts ready

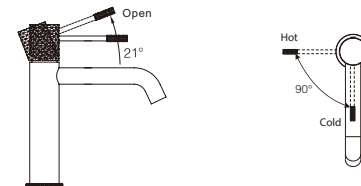


Step 2. Install inlet pipe to faucet body



Step 3. Install screw stick to faucet body

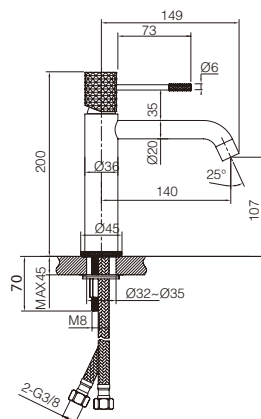
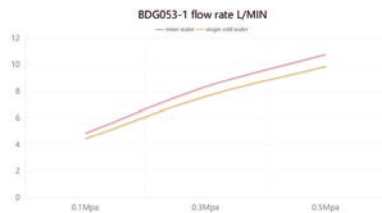
**Usage function instruction**



## FLOW RATE

## Detalles

FLOW RATE REF	BDG053-1
mixer water 0.1Mpa(L/MIN)	4.86
mixer water 0.3Mpa(L/MIN)	8.34
mixer water 0.5Mpa(L/MIN)	10.78
singer cold water 0.1Mpa(L/MIN)	4.46
singer cold water 0.3Mpa(L/MIN)	7.62
singer cold water 0.5Mpa(L/MIN)	9.88



Product sizes (cm)	30*21*5.9
Weight (kg)	0.92
Guarantee	5 years
Max Preasure (bar)	5
Min Preasure (bar)	0.5
Optimum preasure (bar)	1-4 (Recommended 3)
Max. temperature	85°C
Min temperature	65°C

## CERTIFIES

That all our products, provided that they are used in normal conditions or installed in accordance with current standards, are guaranteed against any manufacturing defect for a period of five years, except for products purchased before January 1, 2020, which will have the mandatory coverage of 2 years from the date of invoice.

Requirements and exclusions

Failure to comply with the instructions for assembly, use and maintenance of our products on the packaging and in our catalogue and published on our website: [www.imexproducts.es](http://www.imexproducts.es), releases IMEX PRODUCTS, S.L. from any liability.

In any case, the acceptance of the defect by our technical department is necessary. In addition, transport costs will be charged only in the event that on IMEX PRODUCTS, S.L. technician determines the proper functioning of our products.

IMEX PRODUCTS, S.L. will decide to repair the product or replace it. It will be necessary to present the purchase invoice.

Assembly, maintenance or repairs carried out by non-specialists are excluded from the warranty.

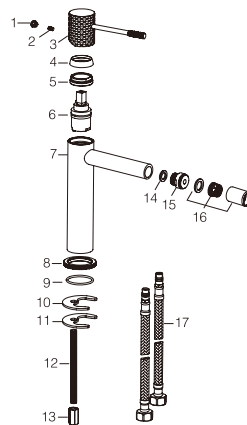
Wearing parts such as hoses, handles, seals, filters, aerators, etc. are not covered by the warranty.



**PRODUCT  
INFORMATION  
SUMMARY**



Ref.	EAN	Finish
BDG053-2	8435668034159	Chrome
BDG053-2BGM	8435668034166	Black gun metal
BDG053-2NG	8435668034173	Matte black
BDG053-2ORC	8435668034197	Brushed rose gold
BDG053-2OC	8435668034180	Brushed gold
BDG053-2NQ	8435668059589	Brushed niquel

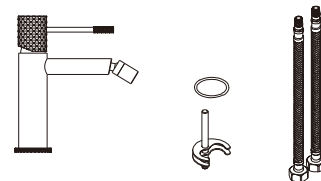


CODE	NAME	MATERIAL	REF
1	Button	ABS	
2	Screw	SUS 304	
3	Handle	Brass	
4	Decorative cap	ABS	
5	Nut	Brass	
6	Cartridge	26mm up	CRT096*
7	Body	Brass	
8	Base	Brass	
9	O-ring	NBR	
10	Rubber plate	NBR	
11	Metal plate	SUS 304	
12	M-8 Screw	SUS 304	
13	M-8 Nut	Brass	
14	Spout gasket	NBR	
15	Spout	ASSY	
16	Aerator	ABS / 16mm	SAT-AIR060*
17	Connecting Pipe	TAQ-PEX-DN6-ACB H3/8-M10X1 L12-500-R&B	SAT-HOSES7*

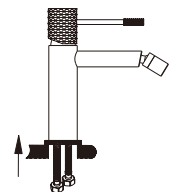
\* CONSULTAR PARA ACABADOS DE COLOR

**Installing instruction**

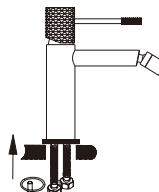
Step 1. Check all spare parts ready



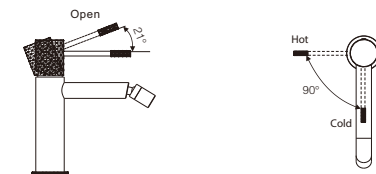
Step 2. Install inlet pipe to faucet body



Step 3. Install screw stick to faucet body

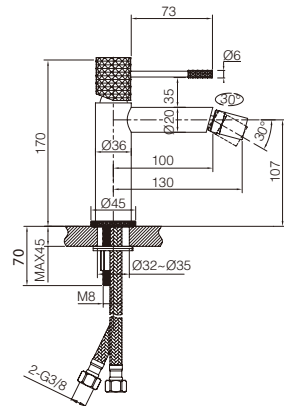
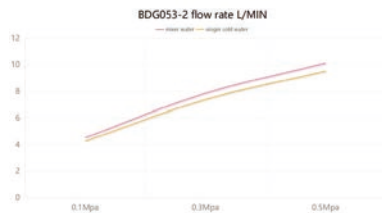


**Usage function instruction**



## FLOW RATE

Detalles	
FLOW RATE REF	BDG053-2
mixer water 0.1Mpa(L/MIN)	4.54
mixer water 0.3Mpa(L/MIN)	7.85
mixer water 0.5Mpa(L/MIN)	10.12
singer cold water 0.1Mpa(L/MIN)	4.28
singer cold water 0.3Mpa(L/MIN)	7.38
singer cold water 0.5Mpa(L/MIN)	9.52



Product sizes (cm)	26.7*18.1*5.9
Weight (kg)	0.9
Guarantee	5 years
Max Preasure (bar)	5
Min Preasure (bar)	0.5
Optimum preasure (bar)	1-4 (Recommended 3)
Max. temperature	85°C
Min temperature	65°C

## CERTIFIES

That all our products, provided that they are used in normal conditions or installed in accordance with current standards, are guaranteed against any manufacturing defect for a period of five years, except for products purchased before January 1, 2020, which will have the mandatory coverage of 2 years from the date of invoice.

Requirements and exclusions

Failure to comply with the instructions for assembly, use and maintenance of our products on the packaging and in our catalogue and published on our website: [www.imexproducts.es](http://www.imexproducts.es), releases IMEX PRODUCTS, S.L. from any liability.

In any case, the acceptance of the defect by our technical department is necessary. In addition, transport costs will be charged only in the event that on IMEX PRODUCTS, S.L. technician determines the proper functioning of our products.

IMEX PRODUCTS, S.L. will decide to repair the product or replace it. It will be necessary to present the purchase invoice.

Assembly, maintenance or repairs carried out by non-specialists are excluded from the warranty.

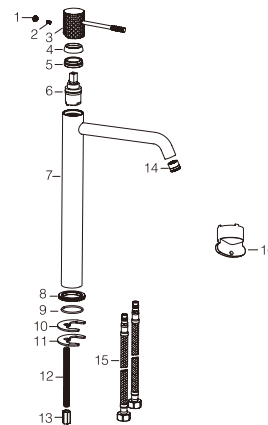
Wearing parts such as hoses, handles, seals, filters, aerators, etc. are not covered by the warranty.



**PRODUCT  
INFORMATION  
SUMMARY**



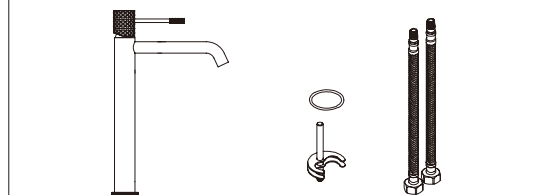
Ref.	EAN	Finish
BDG053-3	8435668034203	Chrome
BDG053-3BGM	8435668034210	Black gun metal
BDG053-3NG	8435668034227	Matte black
BDG053-3ORC	8435668034241	Brushed rose gold
BDG053-3OC	8435668034234	Brushed gold
BDG053-3NQ	8435668060158	Brushed níquel



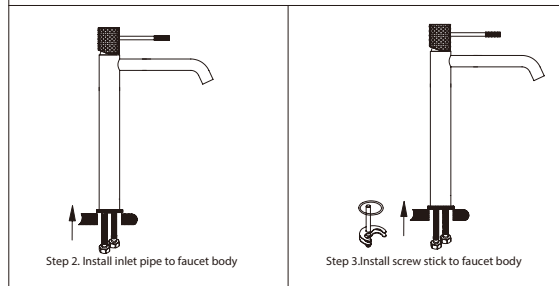
CODE	NAME	MATERIAL	REF
1	Button	ABS	
2	Screw	SUS 304	
3	Handle	Brass	
4	Decorative cap	ABS	
5	Nut	Brass	
6	Cartridge	26mm up	CRT096*
7	Body	Brass	
8	Base	Brass	
9	O-ring	NBR	
10	Rubber plate	NBR	
11	Metal plate	SUS 304	
12	M8-Screw	SUS 304	
13	M8-Nut	Brass	
14	Aerator	ABS / M16.5x1mm	SAT-AIR060*
15	Connecting Pipe	TAQ-PEX-DN6-ACB H3/8-M10X1 L12-500-R&B	SAT-HOSES7*
16	Aerator Spanner	Plastic	

\* CONSULTAR PARA ACABADOS DE COLOR

**Installing instruction**



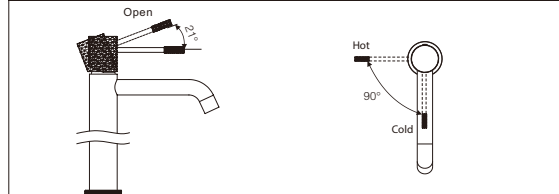
Step 1. Check all spare parts ready



Step 2. Install inlet pipe to faucet body

Step 3. Install screw stick to faucet body

**Useage function instruction**



**GÉNOVA**

Series

**IMEX**  
BATH EQUIPMENTS**GÉNOVA**

Series

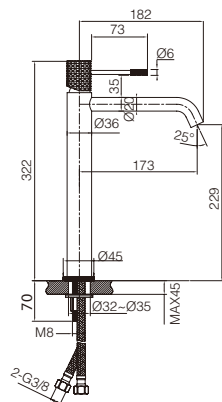
**IMEX**  
BATH EQUIPMENTS**GÉNOVA**

Series

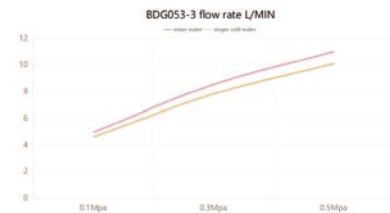
**IMEX**  
BATH EQUIPMENTS**FLOW RATE**

## Detalles

FLOW RATE REF	BDG053-3
mixer water 0.1Mpa(L/MIN)	4.95
mixer water 0.3Mpa(L/MIN)	8.53
mixer water 0.5Mpa(L/MIN)	11.01
singer cold water 0.1Mpa(L/MIN)	4.61
singer cold water 0.3Mpa(L/MIN)	7.82
singer cold water 0.5Mpa(L/MIN)	10.1



Product sizes (cm)	39*21*5.9
Weight (kg)	1.2
Guarantee	5 years
Max Preasure (bar)	5
Min Preasure (bar)	0.5
Optimum preasure (bar)	1-4 (Recommended 3)
Max. temperature	85°C
Min temperature	65°C

**CERTIFIES**

That all our products, provided that they are used in normal conditions or installed in accordance with current standards, are guaranteed against any manufacturing defect for a period of five years, except for products purchased before January 1, 2020, which will have the mandatory coverage of 2 years from the date of invoice.

Requirements and exclusions

Failure to comply with the instructions for assembly, use and maintenance of our products on the packaging and in our catalogue and published on our website: [www.imexproducts.es](http://www.imexproducts.es), releases IMEX PRODUCTS, S.L. from any liability.

In any case, the acceptance of the defect by our technical department is necessary. In addition, transport costs will be charged only in the event that on IMEX PRODUCTS, S.L. technician determines the proper functioning of our products.

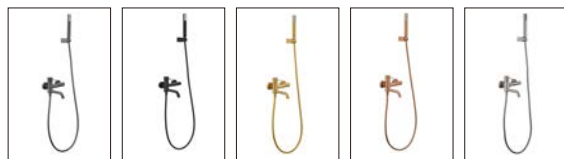
IMEX PRODUCTS, S.L. will decide to repair the product or replace it. It will be necessary to present the purchase invoice.

Assembly, maintenance or repairs carried out by non-specialists are excluded from the warranty.

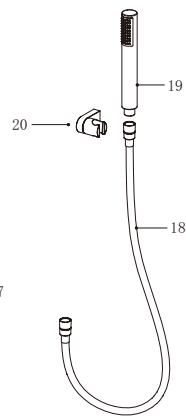
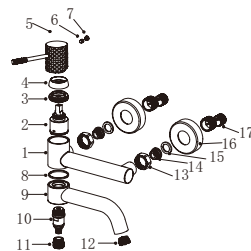
Wearing parts such as hoses, handles, seals, filters, aerators, etc. are not covered by the warranty.



# PRODUCT INFORMATION SUMMARY



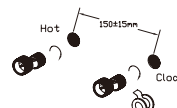
Ref.	EAN	Finish
BDG053-4	8435668034258	Chrome
BDG053-4BGM	8435668034265	Black gun metal
BDG053-4NG	8435668034272	Matte black
BDG053-4ORC	8435668034296	Brushed rose gold
BDG053-4OC	8435668034289	Brushed gold
BDG053-4NQ	8435668060165	Brushed nickel



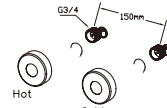
CODE	NAME	MATERIAL	REF
1	Body	Brass	
2	Cartridge	35mm	CRT006*
3	Nut	Brass	
4	Cover	ABS	
5	Handle	Brass	
6	Screw	SUS 304	
7	Cover	ABS	
8	Washer	POM	
9	Outlet pipe	Brass	
10	Cartridge	Brass/24mm	
11	Connector	Brass	
12	Aerator	ABS/M18.5x1mm	SAT-AIR018*
13	Nut	Brass	
14	Valve	SUS 304	
15	Rubber washer	NBR	
16	Cover	SUS 304	
17	Cabrio leg	SUS 304	
18	Hose	PVC	FLX010*
19	Shower hand	ABS	MDR015*
20	Shower base	ABS	SMD007*

\* CONSULTAR PARA ACABADOS DE COLOR

### Installing instruction



Step 1. Connect curved leg with the inlet pipe inside the wall



Step 2. Connect decorative cover to curved leg

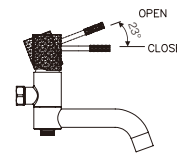
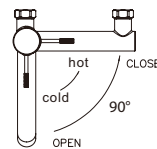


Step 3. Install shower faucet properly, and connect to curved leg on the wall



Step 4. Test function of shower set, clean the set

### Usage function instruction

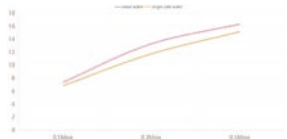


## FLOW RATE

Detalles	
FLOW RATE REF	BDG053-4
water outlet mixer water 0.1Mpa(L/MIN)	7.41
water outlet mixer water 0.3Mpa(L/MIN)	13.33
water outlet mixer water 0.5Mpa(L/MIN)	16.38
water outlet singer cold water 0.1Mpa(L/MIN)	6.89
water outlet singer cold water 0.3Mpa(L/MIN)	11.79
water outlet singer cold water 0.5Mpa(L/MIN)	15.2
hand shower mixer water 0.1Mpa(L/MIN)	5.76
hand shower mixer water 0.3Mpa(L/MIN)	10.38
hand shower mixer water 0.5Mpa(L/MIN)	13.86
hand shower singer cold water 0.1Mpa(L/MIN)	5.46
hand shower singer cold water 0.3Mpa(L/MIN)	9.83
hand shower singer cold water 0.5Mpa(L/MIN)	13.07

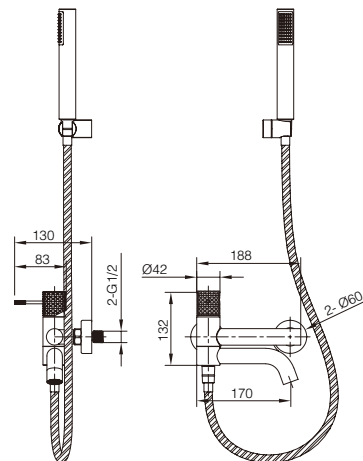
water outlet

BDG053-4 flow rate L/MIN



hand shower

BDG053-4 flow rate L/MIN



Product sizes (cm)	28*16*12.2
Weight (kg)	1.85
Guarantee	5 years
Max Preassure (bar)	5
Min Preassure (bar)	0.5
Optimum preassure (bar)	1-4 (Recommended 3)
Max. temperature	85°C
Min temperature	65°C

## CERTIFIES

That all our products, provided that they are used in normal conditions or installed in accordance with current standards, are guaranteed against any manufacturing defect for a period of five years, except for products purchased before January 1, 2020, which will have the mandatory coverage of 2 years from the date of invoice.

Requirements and exclusions

Failure to comply with the instructions for assembly, use and maintenance of our products on the packaging and in our catalogue and published on our website: [www.imexproducts.es](http://www.imexproducts.es), releases IMEX PRODUCTS, S.L. from any liability.

In any case, the acceptance of the defect by our technical department is necessary. In addition, transport costs will be charged only in the event that on IMEX PRODUCTS, S.L. technician determines the proper functioning of our products.

IMEX PRODUCTS, S.L. will decide to repair the product or replace it. It will be necessary to present the purchase invoice.

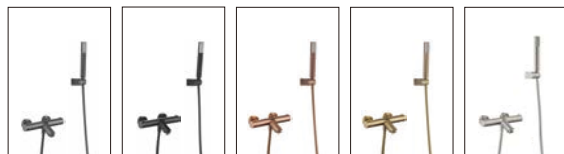
Assembly, maintenance or repairs carried out by non-specialists are excluded from the warranty.

Wearing parts such as hoses, handles, seals, filters, aerators, etc. are not covered by the warranty.

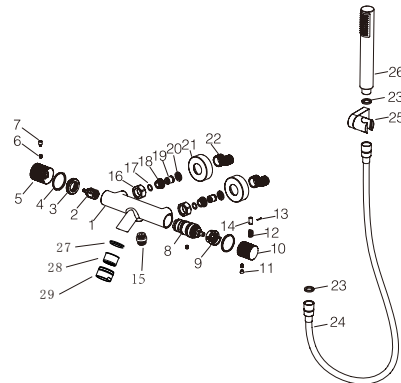




**PRODUCT  
INFORMATION  
SUMMARY**



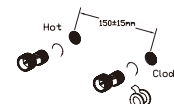
Ref.	EAN	Finish
BTG053-4	8435668042857	Chrome
BTG053-4BGM	8435668042864	Black gun metal
BTG053-4NG	8435668042871	Matte black
BTG053-4ORC	8435668042895	Brushed rose gold
BTG053-4OC	8435668042888	Brushed gold
BTG053-4NQ	8435668060196	Brushed niquel



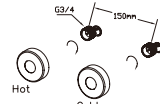
CODE	NAME	MATERIAL	REF	CODE	NAME	MATERIAL	REF
1	Body	Brass		20	Rubber washer	NBR	
2	Cartridge	25mm up		21	Cover	SUS 304	
3	Nut	Brass		22	Cabrio leg	SUS 304	
4	Washer	POM		23	Rubber washer	NBR	
5	Handle	Brass		24	Hose	SUS 304 / PVC	FLX010*
6	Screw	SUS 304		25	Shower seat	ABS	SMD007*
7	Handle lever	Brass		26	Shower hand	ABS	MDR015*
8	Cartridge	32mm	CRT012*	27	Rubber washer	NBR	
9	Washer	POM		28	Aerator	24mm	
10	Handle	Brass		29	percolator	SUS 304	
11	Cover	ABS					
12	Spring	SUS 304					
13	Pin	SUS 304					
14	Handle lever	Brass					
15	Connect	Brass					
16	Nut	Brass					
17	O-ring	NBR					
18	Screw	SUS 304					
19	Valve	ABS					

\* CONSULTAR PARA ACABADOS DE COLOR

Installing instruction



Step 1. Connect curved leg with the inlet pipe inside the wall



Step 2. Connect decorate cover to curved leg

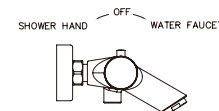
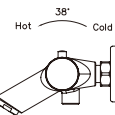


Step 3. Install shower faucet properly, and connect to curved leg on the wall



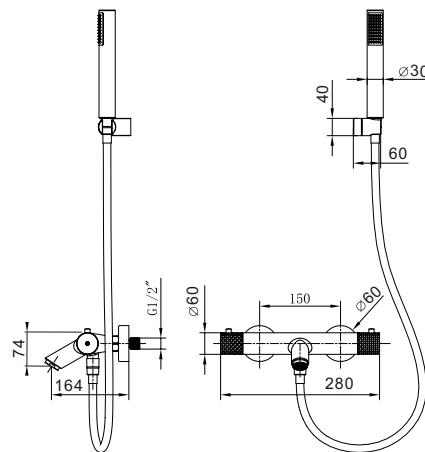
Step 4. Test function of shower set, clean the set

Usage function instruction



## FLOW RATE

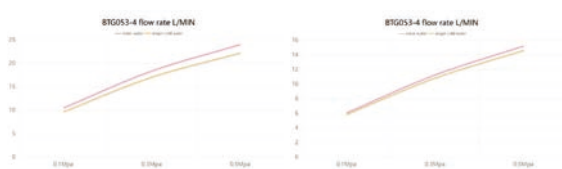
Detalles	
FLOW RATE REF	BTG053-4
water outlet mixer water 0.1Mpa(L/MIN)	10.48
water outlet mixer water 0.3Mpa(L/MIN)	18.37
water outlet mixer water 0.5Mpa(L/MIN)	24.02
water outlet singer cold water 0.1Mpa(L/MIN)	9.65
water outlet singer cold water 0.3Mpa(L/MIN)	17.04
water outlet singer cold water 0.5Mpa(L/MIN)	22.2
hand shower mixer water 0.1Mpa(L/MIN)	6.05
hand shower mixer water 0.3Mpa(L/MIN)	11.24
hand shower mixer water 0.5Mpa(L/MIN)	15.2
hand shower singer cold water 0.1Mpa(L/MIN)	5.82
hand shower singer cold water 0.3Mpa(L/MIN)	10.8
hand shower singer cold water 0.5Mpa(L/MIN)	14.6



Product sizes (cm)	33*19.5*10.5
Weight (kg)	2.5
Guarantee	5 years
Max Preassure (bar)	5
Min Preassure (bar)	0.5
Optimum preassure (bar)	1-4 (Recommended 3)
Max. temperature	85°C
Min temperature	65°C

water outlet

hand shower



## CERTIFIES

That all our products, provided that they are used in normal conditions or installed in accordance with current standards, are guaranteed against any manufacturing defect for a period of five years, except for products purchased before January 1, 2020, which will have the mandatory coverage of 2 years from the date of invoice.

### Requirements and exclusions

Failure to comply with the instructions for assembly, use and maintenance of our products on the packaging and in our catalogue and published on our website: [www.imexproducts.es](http://www.imexproducts.es), releases IMEX PRODUCTS, S.L. from any liability.

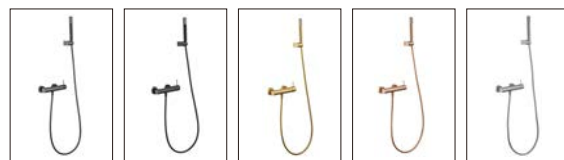
In any case, the acceptance of the defect by our technical department is necessary. In addition, transport costs will be charged only in the event that an IMEX PRODUCTS, S.L. technician determines the proper functioning of our products.

IMEX PRODUCTS, S.L. will decide to repair the product or replace it. It will be necessary to present the purchase invoice.

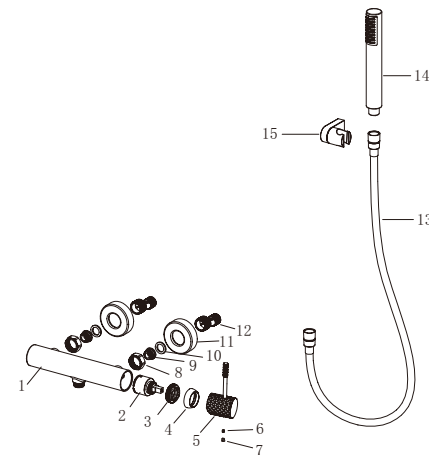
Assembly, maintenance or repairs carried out by non-specialists are excluded from the warranty.

Wearing parts such as hoses, handles, seals, filters, aerators, etc. are not covered by the warranty.



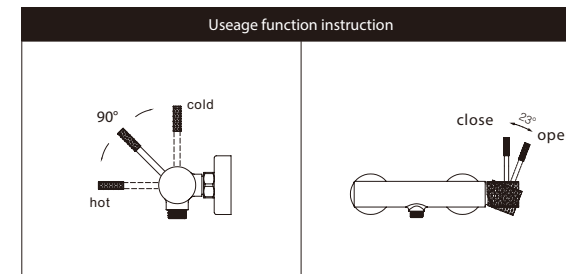
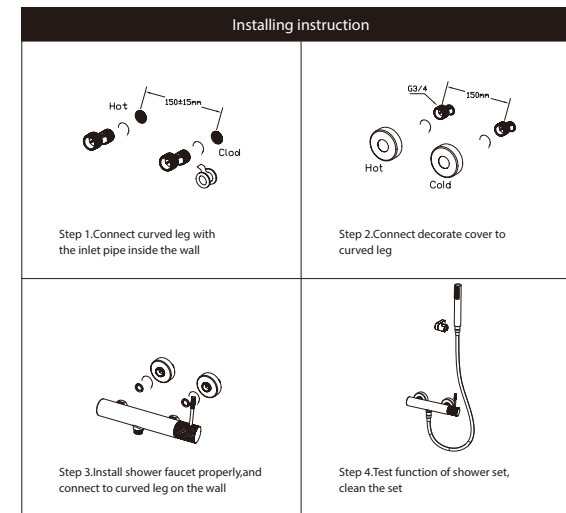


Ref.	EAN	Finish
BDG053-5	8435668034302	Chrome
BDG053-5BGM	8435668034319	Black gun metal
BDG053-5NG	8435668034326	Matte black
BDG053-5ORC	8435668034340	Brushed rose gold
BDG053-5OC	8435668034333	Brushed gold
BDG053-5NQ	8435668060172	Brushed nickel



CODE	NAME	MATERIAL	REF
1	Body	Brass	
2	Cartridge	35mm	CRT006*
3	Nut	Brass	
4	Cover	ABS	
5	Handle	Brass	
6	Screw	SUS 304	
7	Cover	ABS	
8	Nut	Brass	
9	Valve	SUS 304	
10	Rubber washer	NBR	
11	Connector	SUS 304	
12	Cabrio leg	SUS 304	
13	Hose	PVC	FLX010*
14	Shower hand	ABS	MDR015*
15	Shower base	ABS	SMD007*

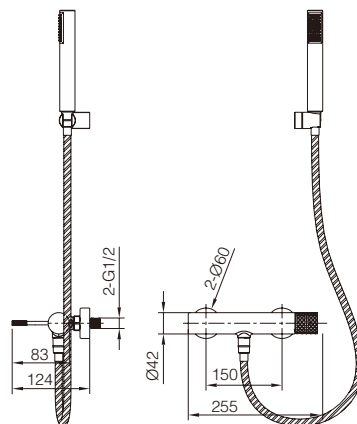
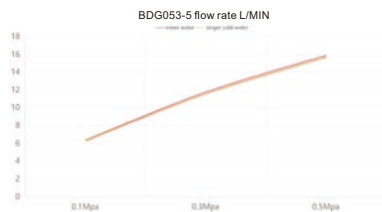
\* CONSULTAR PARA ACABADOS DE COLOR



**PRODUCT  
INFORMATION  
SUMMARY**

## FLOW RATE

Detalles	
FLOW RATE REF	BDG053-5
mixer water 0.1Mpa(L/MIN)	6.37
mixer water 0.3Mpa(L/MIN)	11.76
mixer water 0.5Mpa(L/MIN)	15.9
singer cold water 0.1Mpa(L/MIN)	6.36
singer cold water 0.3Mpa(L/MIN)	11.58
singer cold water 0.5Mpa(L/MIN)	15.7



Product sizes (cm)	28*16*12.2
Weight (kg)	1.95
Guarantee	5 years
Max Preasure (bar)	5
Min Preasure (bar)	0.5
Optimum preasure (bar)	1-4 (Recommended 3)
Max. temperature	85°C
Min temperature	65°C

## CERTIFIES

That all our products, provided that they are used in normal conditions or installed in accordance with current standards, are guaranteed against any manufacturing defect for a period of five years, except for products purchased before January 1, 2020, which will have the mandatory coverage of 2 years from the date of invoice.

Requirements and exclusions

Failure to comply with the instructions for assembly, use and maintenance of our products on the packaging and in our catalogue and published on our website: [www.imexproducts.es](http://www.imexproducts.es), releases IMEX PRODUCTS, S.L. from any liability.

In any case, the acceptance of the defect by our technical department is necessary. In addition, transport costs will be charged only in the event that on IMEX PRODUCTS, S.L. technician determines the proper functioning of our products.

IMEX PRODUCTS, S.L. will decide to repair the product or replace it. It will be necessary to present the purchase invoice.

Assembly, maintenance or repairs carried out by non-specialists are excluded from the warranty.

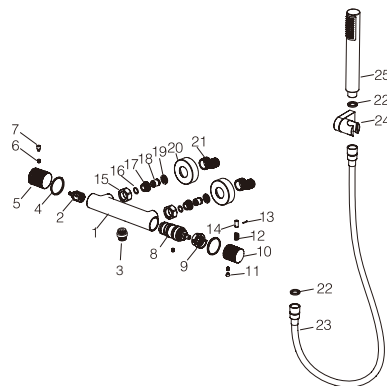
Wearing parts such as hoses, handles, seals, filters, aerators, etc. are not covered by the warranty.



**PRODUCT  
INFORMATION  
SUMMARY**

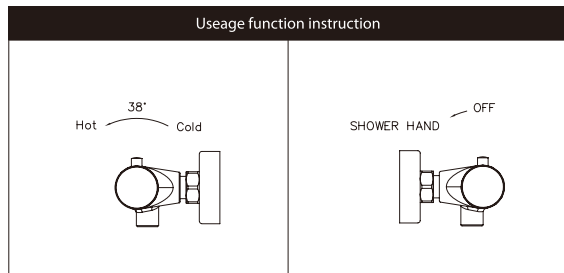
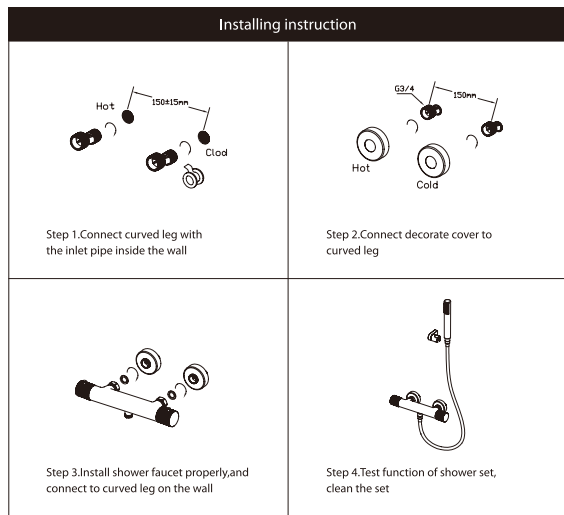


Ref.	EAN	Finish
BTG053-5	8435668042901	Chrome
BTG053-5BGM	8435668042918	Black gun metal
BTG053-5NG	8435668042925	Matte black
BTG053-5ORC	8435668042949	Brushed rose gold
BTG053-5OC	8435668042932	Brushed gold
BTG053-5NQ	843566806202	Brushed niquel



CODE	NAME	MATERIAL	REF	CODE	NAME	MATERIAL	REF
1	Body	Brass		20	Cover	SUS 304	
2	Cartridge	21mm		21	Cabrio leg	SUS 304	
3	Connect	Brass		22	Rubber washer	NBR	
4	Washer	POM		23	Hose	SUS 304 / PVC	FLX005*
5	Handle	Brass		24	Shower seat	ABS	SMD007*
6	Screw	SUS 304		25	Shower hand	ABS	MDR015*
7	Handle lever	Brass					
8	Cartridge	32mm	CRT012*				
9	Washer	POM					
10	Handle	Brass					
11	Cover	ABS					
12	Spring	SUS 304					
13	Pin	SUS 304					
14	Handle lever	Brass					
15	Nut	Brass					
16	O-ring	NBR					
17	Screw	SUS 304					
18	Valve	ABS					
19	Rubber washer	NBR					

\* CONSULTAR PARA ACABADOS DE COLOR



GÉNOVA

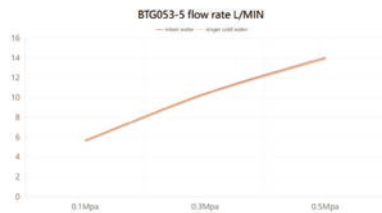
Series

IMEX  
BATH EQUIPMENTS

## FLOW RATE

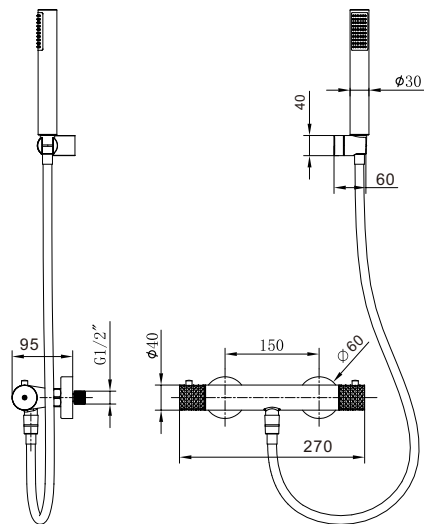
## Detalles

FLOW RATE REF	BTG053-5
mixer water 0.1Mpa(L/MIN)	5.71
mixer water 0.3Mpa(L/MIN)	10.44
mixer water 0.5Mpa(L/MIN)	14.1
singer cold water 0.1Mpa(L/MIN)	5.68
singer cold water 0.3Mpa(L/MIN)	10.39
singer cold water 0.5Mpa(L/MIN)	13.96



GÉNOVA

Series

IMEX  
BATH EQUIPMENTS

Product sizes (cm)	33*19.5*10.5
Weight (kg)	2.2
Guarantee	5 years
Max Preassure (bar)	5
Min Preassure (bar)	0.5
Optimum preassure (bar)	1-4 (Recommended 3)
Max. temperature	85°C
Min temperature	65°C

GÉNOVA

Series

IMEX  
BATH EQUIPMENTS

## CERTIFIES

That all our products, provided that they are used in normal conditions or installed in accordance with current standards, are guaranteed against any manufacturing defect for a period of five years, except for products purchased before January 1, 2020, which will have the mandatory coverage of 2 years from the date of invoice.

Requirements and exclusions

Failure to comply with the instructions for assembly, use and maintenance of our products on the packaging and in our catalogue and published on our website: [www.imexproducts.es](http://www.imexproducts.es), releases IMEX PRODUCTS, S.L. from any liability.

In any case, the acceptance of the defect by our technical department is necessary. In addition, transport costs will be charged only in the event that on IMEX PRODUCTS, S.L. technician determines the proper functioning of our products.

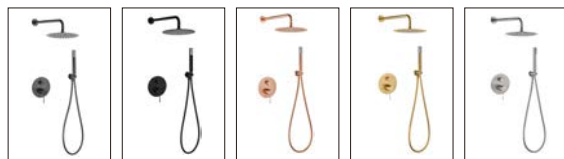
IMEX PRODUCTS, S.L. will decide to repair the product or replace it. It will be necessary to present the purchase invoice.

Assembly, maintenance or repairs carried out by non-specialists are excluded from the warranty.

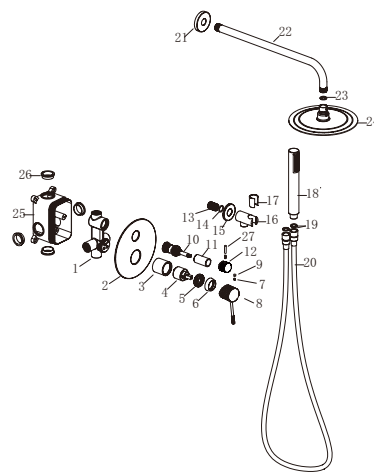
Wearing parts such as hoses, handles, seals, filters, aerators, etc. are not covered by the warranty.



# PRODUCT INFORMATION SUMMARY



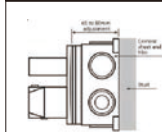
Ref.	EAN	Finish
GPG053	8435668035491	Chrome
GPG053/BGM	8435668035507	Black gun metal
GPG053/NG	8435668035514	Matte black
GPG053/ORC	8435668035538	Brushed rose gold
GPG053/OC	8435668035521	Brushed gold
GPG053/NQ	8435668060295	Brushed nickel



CODE	NAME	MATERIAL	REF	CODE	NAME	MATERIAL	REF
1	Body	Brass		20	Hose	PVC	FLX002*
2	Decorative plate	SUS 304		21	Cover	SUS 304	
3	Cartridge cover	Brass		22	Hose	SUS 304	BPR001*
4	Cartridge	35mm	CRT006*	23	Rubber ring	NBR	
5	Nut	Brass		24	Shower head	SUS 304	RDN002*
6	Decorative cup	ABS		25	BOX	ABS	
7	Screw	SUS 304		26	Rubber ring	NBR	
8	Handle	Brass		27	Handle lever	Brass	
9	Button	ABS					
10	Cartridge	Brass/27mm	CRT060*				
11	Cover	Brass					
12	Handle	Brass					
13	Connect	Brass					
14	O-ring	NBR					
15	Cover	Brass					
16	Body	Brass					
17	Plastic washer	Plastic					
18	Shower	Plastic	MDR015*				
19	Rubber ring	NBR					

\* CONSULTAR PARA ACABADOS DE COLOR

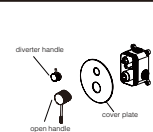
### Installing instruction



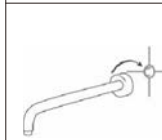
Step 1. Connect curved leg with the inlet pipe inside the wall



Step 2. Connect decorative cover to the curved leg



Step 3. Install shower faucet properly, and connect to curved leg on the wall



Step 4. Install shower pipe according to the distance of fix part

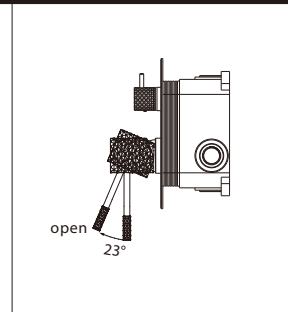
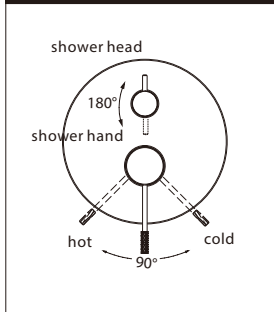


Step 5. Install shower hand and shower head to the set



Step 6. Test function of shower set, clean the set

### Usage function instruction

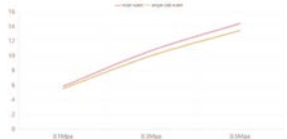


## FLOW RATE

Detalles	
FLOW RATE REF	GPG053
hand shower mixer water 0.1Mpa(L/MIN)	5.85
hand shower mixer water 0.3Mpa(L/MIN)	10.74
hand shower mixer water 0.5Mpa(L/MIN)	14.43
hand shower singer cold water 0.1Mpa(L/MIN)	5.55
hand shower singer cold water 0.3Mpa(L/MIN)	10.05
hand shower singer cold water 0.5Mpa(L/MIN)	13.48
shower head mixer water 0.1Mpa(L/MIN)	5.87
shower head mixer water 0.3Mpa(L/MIN)	12.34
shower head mixer water 0.5Mpa(L/MIN)	15.75
shower head singer cold water 0.1Mpa(L/MIN)	6.1
shower head singer cold water 0.3Mpa(L/MIN)	11.58
shower head singer cold water 0.5Mpa(L/MIN)	15.37

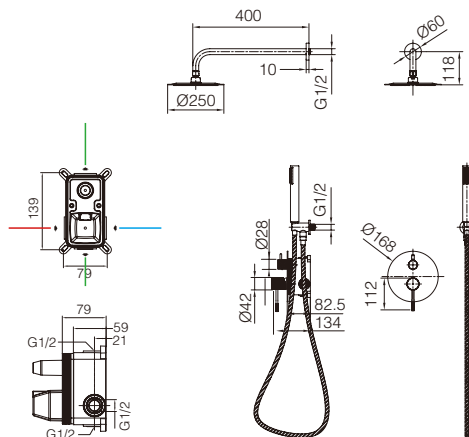
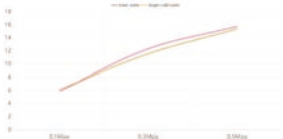
hand shower

GPG053 flow rate L/MIN



shower head

GPG053 flow rate L/MIN



Product sizes (cm)	43*30*14
Weight (kg)	4.3
Guarantee	5 years
Max Preassure (bar)	5
Min Preassure (bar)	0.5
Optimum preassure (bar)	1-4 (Recommended 3)
Max. temperature	85°C
Min temperature	65°C

## CERTIFIES

That all our products, provided that they are used in normal conditions or installed in accordance with current standards, are guaranteed against any manufacturing defect for a period of five years, except for products purchased before January 1, 2020, which will have the mandatory coverage of 2 years from the date of invoice.

Requirements and exclusions

Failure to comply with the instructions for assembly, use and maintenance of our products on the packaging and in our catalogue and published on our website: [www.imexproducts.es](http://www.imexproducts.es), releases IMEX PRODUCTS, S.L. from any liability.

In any case, the acceptance of the defect by our technical department is necessary. In addition, transport costs will be charged only in the event that on IMEX PRODUCTS, S.L. technician determines the proper functioning of our products.

IMEX PRODUCTS, S.L. will decide to repair the product or replace it. It will be necessary to present the purchase invoice.

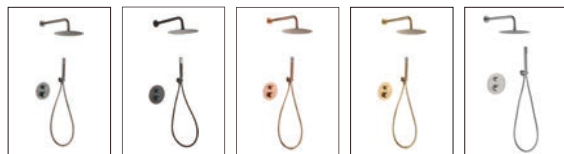
Assembly, maintenance or repairs carried out by non-specialists are excluded from the warranty.

Wearing parts such as hoses, handles, seals, filters, aerators, etc. are not covered by the warranty.

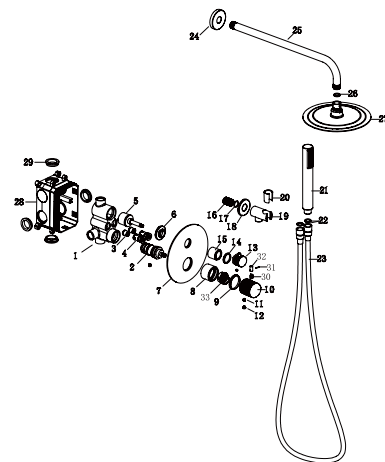




# PRODUCT INFORMATION SUMMARY



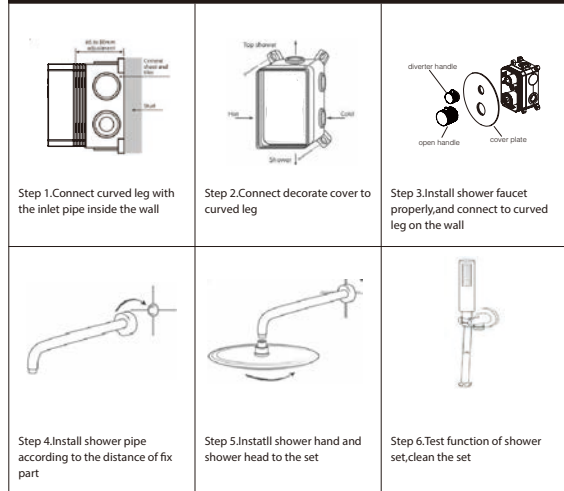
Ref.	EAN	Finish
GTG053	8435668043205	Chrome
GTG053-BGM	8435668043212	Black gun metal
GTG053-NG	8435668043229	Matte black
GTG053-ORC	8435668043243	Brushed rose gold
GTG053-OC	8435668043236	Brushed gold
GTG053-NQ	8435668060301	Brushed niquel



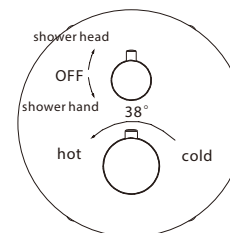
CODE	NAME	MATERIAL	REF	CODE	NAME	MATERIAL	REF
1	Body	Brass		20	Plastic washer	Plastic	
2	Cartridge	32mm	CRT012*	21	Shower hand	Plastic	MDR015*
3	Check valve	ASSY		22	Rubber ring	NBR	
4	Control valve	ASSY		23	Hose	SUS 304 / PVC	FLX005*
5	Cartridge	33mm up	CRT067*	24	Cover	SUS 304	
6	Nut	Brass		25	Hose	SUS 304	BPR001*
7	Decorative plate	SUS 304		26	Rubber ring	NBR	
8	Cartridge cover	Brass		27	Shower head	SUS 304	RDN002*
9	Plastic washer	Plastic		28	BOX	ABS	
10	Handle	Brass		29	Rubber ring	NBR	
11	Screw	SUS 304		30	Spring	SUS 304	
12	Button	ABS		31	Pin	SUS 304	
13	Handle	Brass		32	Handle lever	Brass	
14	Plastic washer	Plastic		33	Washer	POM	
15	Cover	Brass					
16	Connect	Brass					
17	O-ring	NBR					
18	Cover	Brass					
19	Body	Brass					

\* CONSULTAR PARA ACABADOS DE COLOR

### Installing instruction



### Usage function instruction

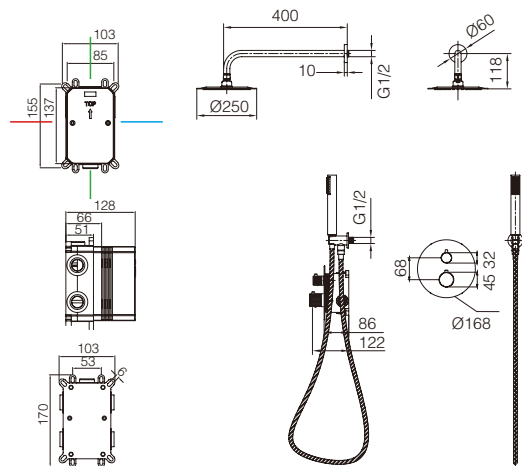
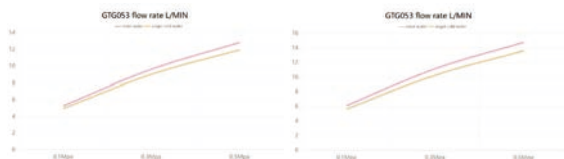


## FLOW RATE

Detalles	
FLOW RATE REF	GTG053
hand shower mixer water 0.1Mpa(L/MIN)	5.27
hand shower mixer water 0.3Mpa(L/MIN)	9.62
hand shower mixer water 0.5Mpa(L/MIN)	12.84
hand shower singer cold water 0.1Mpa(L/MIN)	4.95
hand shower singer cold water 0.3Mpa(L/MIN)	9.02
hand shower singer cold water 0.5Mpa(L/MIN)	11.95
shower head mixer water 0.1Mpa(L/MIN)	6.1
shower head mixer water 0.3Mpa(L/MIN)	11.16
shower head mixer water 0.5Mpa(L/MIN)	14.76
shower head singer cold water 0.1Mpa(L/MIN)	5.63
shower head singer cold water 0.3Mpa(L/MIN)	10.28
shower head singer cold water 0.5Mpa(L/MIN)	13.6

hand shower

shower head



Product sizes (cm)	43*30*14
Weight (kg)	4.8
Guarantee	5 years
Max Preasure (bar)	5
Min Preasure (bar)	0.5
Optimum preasure (bar)	1-4 (Recommended 3)
Max. temperature	85°C
Min temperature	65°C

## CERTIFIES

That all our products, provided that they are used in normal conditions or installed in accordance with current standards, are guaranteed against any manufacturing defect for a period of five years, except for products purchased before January 1, 2020, which will have the mandatory coverage of 2 years from the date of invoice.

Requirements and exclusions

Failure to comply with the instructions for assembly, use and maintenance of our products on the packaging and in our catalogue and published on our website: [www.imexproducts.es](http://www.imexproducts.es), releases IMEX PRODUCTS, S.L. from any liability.

In any case, the acceptance of the defect by our technical department is necessary. In addition, transport costs will be charged only in the event that on IMEX PRODUCTS, S.L. technician determines the proper functioning of our products.

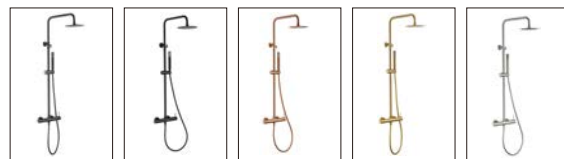
IMEX PRODUCTS, S.L. will decide to repair the product or replace it. It will be necessary to present the purchase invoice.

Assembly, maintenance or repairs carried out by non-specialists re excluded from the warranty.

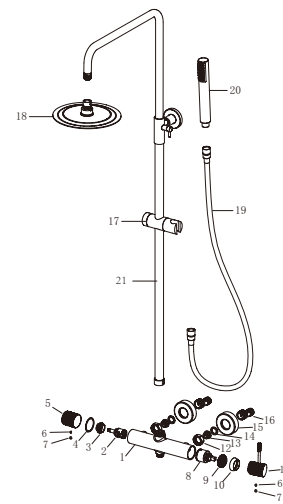
Wearing parts such as hoses, handles, seals, filters, aerators, etc. are not covered by the warranty.



**PRODUCT  
INFORMATION  
SUMMARY**



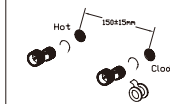
Ref.	EAN	Finish
BDG053	8435668034050	Chrome
BDG053/BGM	8435668034067	Black gun metal
BDG053/NG	8435668034074	Matte black
BDG053/ORC	8435668034098	Brushed rose gold
BDG053/OC	8435668034081	Brushed gold
BDG053/NQ	8435668060141	Brushed nickel



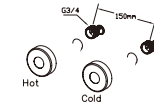
CODE	NAME	MATERIAL	REF	CODE	NAME	MATERIAL	REF
1	Body	Brass		16	Cabrio leg	SUS 304	
2	Cartridge	25mm up	CRT068*	17	Slider	SUS 304	AR00014*
3	Nut	Brass		18	Shower head	SUS 304	RDN0001*
4	Washer	POM		19	Hose	SUS 304 / PVC	FLX0001*
5	Handle	Brass		20	Shower hand	ABS	MDR015*
6	Screw	SUS 304		21	Pipe	SUS 304	
7	Cover	ABS					
8	Cartridge	35mm	CRT006*				
9	Nut	Brass					
10	Cover	ABS					
11	Handle	Brass					
12	Nut	Brass					
13	Valve	SUS 304					
14	Rubber ring	NBR					
15	Cover	SUS 304					

\* CONSULTAR PARA ACABADOS DE COLOR

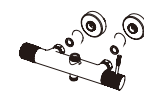
Installing instruction



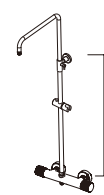
Step 1. Connect curved leg with the inlet pipe inside the wall



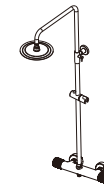
Step 2. Connect decorative cover to curved leg



Step 3. Install shower faucet properly and connect to curved leg on the wall



Step 4. Install shower pipe according to the distance of fix part

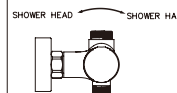
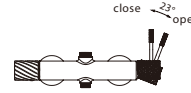
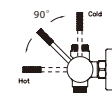


Step 5. Install shower hand and shower head to the set



Step 6. Test function of shower set, clean the set

Usage function instruction

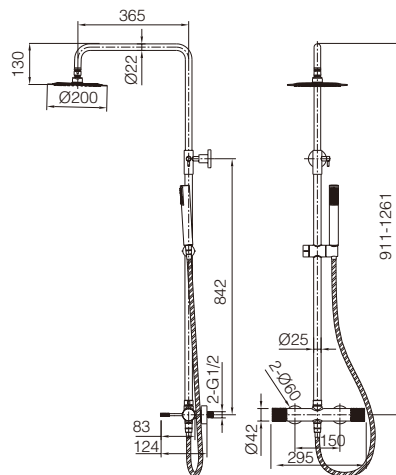
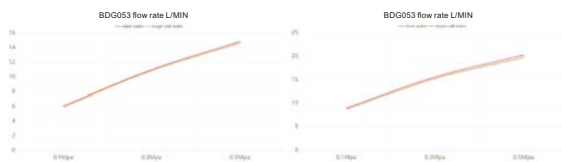


## FLOW RATE

Detalles	
FLOW RATE REF	BDG053
hand shower mixer water 0.1Mpa(L/MIN)	6.03
hand shower mixer water 0.3Mpa(L/MIN)	10.95
hand shower mixer water 0.5Mpa(L/MIN)	14.84
hand shower singer cold water 0.1Mpa(L/MIN)	5.98
hand shower singer cold water 0.3Mpa(L/MIN)	10.86
hand shower singer cold water 0.5Mpa(L/MIN)	14.61
shower head mixer water 0.1Mpa(L/MIN)	8.92
shower head mixer water 0.3Mpa(L/MIN)	15.58
shower head mixer water 0.5Mpa(L/MIN)	20.27
shower head singer cold water 0.1Mpa(L/MIN)	8.76
shower head singer cold water 0.3Mpa(L/MIN)	15.24
shower head singer cold water 0.5Mpa(L/MIN)	19.75

hand shower

shower head



Product sizes (cm)	42.5*13.3*90
Weight (kg)	5.6
Guarantee	5 years
Max Preassure (bar)	5
Min Preassure (bar)	0.5
Optimum preassure (bar)	1-4 (Recommended 3)
Max. temperature	85°C
Min temperature	65°C

## CERTIFIES

That all our products, provided that they are used in normal conditions or installed in accordance with current standards, are guaranteed against any manufacturing defect for a period of five years, except for products purchased before January 1, 2020, which will have the mandatory coverage of 2 years from the date of invoice.

Requirements and exclusions

Failure to comply with the instructions for assembly, use and maintenance of our products on the packaging and in our catalogue and published on our website: [www.imexproducts.es](http://www.imexproducts.es), releases IMEX PRODUCTS, S.L. from any liability.

In any case, the acceptance of the defect by our technical department is necessary. In addition, transport costs will be charged only in the event that on IMEX PRODUCTS, S.L. technician determines the proper functioning of our products.

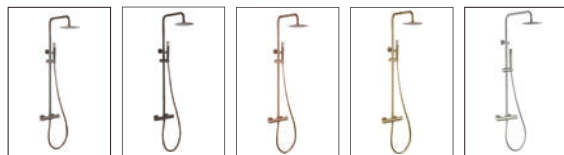
IMEX PRODUCTS, S.L. will decide to repair the product or replace it. It will be necessary to present the purchase invoice.

Assembly, maintenance or repairs carried out by non-specialists are excluded from the warranty.

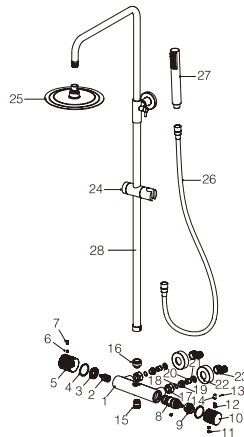
Wearing parts such as hoses, handles, seals, filters, aerators, etc. are not covered by the warranty.



# PRODUCT INFORMATION SUMMARY



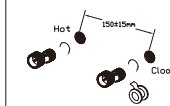
Ref.	EAN	Finish
BTG053	8435668034876	Chrome
BTG053-BGM	8435668034883	Black gun metal
BTG053-NG	8435668034890	Matte black
BTG053-ORC	8435668034913	Brushed rose gold
BTG053-OC	8435668034906	Brushed gold
BTG053-NQ	8435668060189	Brushed niquel



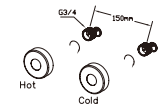
CODE	NAME	MATERIAL	REF	CODE	NAME	MATERIAL	REF
1	Body	Brass		20	Valve	ABS	
2	Cartridge	25mm up		21	Rubber washer	NBR	
3	Nut	Brass		22	Cover	SUS 304	
4	Washer	POM		23	Cabrio leg	SUS 304	
5	Handle	Brass		24	Slider	ABS	RR0014*
6	Screw	SUS 304		25	Shower head	SUS 304	RDN001*
7	Handle lever	Brass		26	Hose	SUS 304 / PVC	FLX005*
8	Cartridge	32mm	CRT012*	27	Shower hand	ABS	MDR015*
9	Washer	POM		28	Pipe	SUS 304	
10	Handle	Brass					
11	Cover	ABS					
12	Spring	SUS 304					
13	Pin	SUS 304					
14	Handle lever	Brass					
15	Connect	Brass					
16	Connect	Brass					
17	Nut	Brass					
18	O-ring	NBR					
19	Screw	SUS 304					

\* CONSULTAR PARA ACABADOS DE COLOR

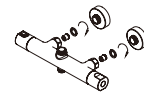
### Installing instruction



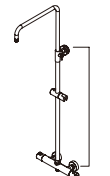
Step 1. Connect curved leg with the inlet pipe inside the wall



Step 2. Connect decorate cover to curved leg



Step 3. Install shower faucet properly and connect to curved leg on the wall



Step 4. Install shower pipe according to the distance of fix part

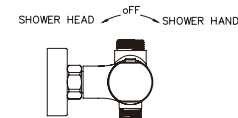
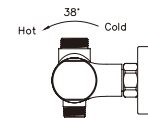


Step 5. Install shower hand and shower head to the set



Step 6. Test function of shower set, clean the set

### Usage function instruction

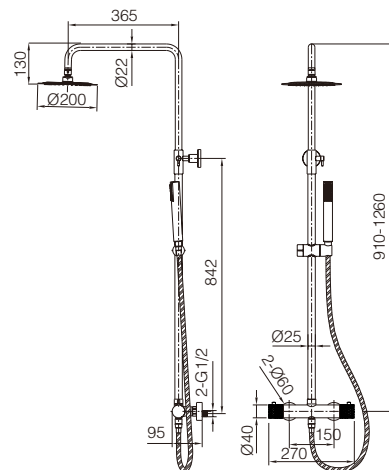
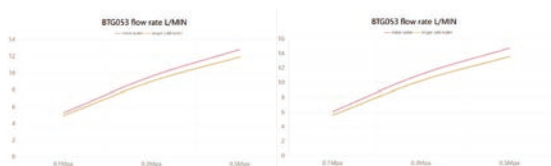


## FLOW RATE

Detalles	
FLOW RATE REF	BTG053
hand shower mixer water 0.1Mpa(L/MIN)	5.27
hand shower mixer water 0.3Mpa(L/MIN)	9.62
hand shower mixer water 0.5Mpa(L/MIN)	12.84
hand shower singer cold water 0.1Mpa(L/MIN)	4.95
hand shower singer cold water 0.3Mpa(L/MIN)	9.02
hand shower singer cold water 0.5Mpa(L/MIN)	11.95
shower head mixer water 0.1Mpa(L/MIN)	6.1
shower head mixer water 0.3Mpa(L/MIN)	11.16
shower head mixer water 0.5Mpa(L/MIN)	14.76
shower head singer cold water 0.1Mpa(L/MIN)	5.63
shower head singer cold water 0.3Mpa(L/MIN)	10.28
shower head singer cold water 0.5Mpa(L/MIN)	13.6

hand shower

shower head



Product sizes (cm)	42.5*13.3*90
Weight (kg)	5.6
Guarantee	5 years
Max Preassure (bar)	5
Min Preassure (bar)	0.5
Optimum preassure (bar)	1-4 (Recommended 3)
Max. temperature	85°C
Min temperature	65°C

## CERTIFIES

That all our products, provided that they are used in normal conditions or installed in accordance with current standards, are guaranteed against any manufacturing defect for a period of five years, except for products purchased before January 1, 2020, which will have the mandatory coverage of 2 years from the date of invoice.

Requirements and exclusions

Failure to comply with the instructions for assembly, use and maintenance of our products on the packaging and in our catalogue and published on our website: [www.imexproducts.es](http://www.imexproducts.es), releases IMEX PRODUCTS, S.L. from any liability.

In any case, the acceptance of the defect by our technical department is necessary. In addition, transport costs will be charged only in the event that on IMEX PRODUCTS, S.L. technician determines the proper functioning of our products.

IMEX PRODUCTS, S.L. will decide to repair the product or replace it. It will be necessary to present the purchase invoice.

Assembly, maintenance or repairs carried out by non-specialists are excluded from the warranty.

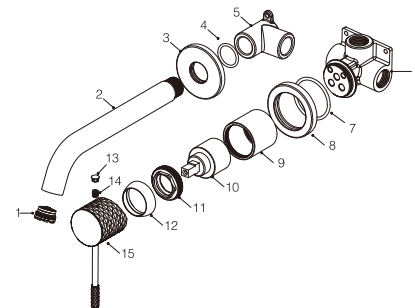
Wearing parts such as hoses, handles, seals, filters, aerators, etc. are not covered by the warranty.



**PRODUCT  
INFORMATION  
SUMMARY**



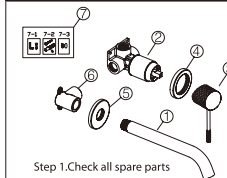
Ref.	EAN	Finish
GLG053	8435668035224	Chrome
GLG053-BGM	8435668035231	Black gun metal
GLG053-NG	8435668035248	Matte black
GLG053-ORC	8435668035262	Brushed rose gold
GLG053-OC	8435668035255	Brushed gold
GLG053-NQ	8435668060288	Brushed niquel



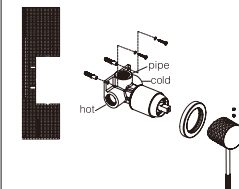
CODE	NAME	MATERIAL	REF
1	Aerator	16.5x1mm	SAT-AIR060*
2	Outlet pipe	Brass	
3	Cover	Brass	
4	O-ring	NBR	
5	Connector	Brass	
6	Body	Brass	
7	O-ring	NBR	
8	Cover	Brass	
9	Cartridge cover	Brass	
10	Cartridge	35mm	CRT018*
11	Nut	Brass	
12	Cover	ABS	
13	Screw	SUS 304	
14	Cover	ABS	
15	Handle	Brass	

\* CONSULTAR PARA ACABADOS DE COLOR

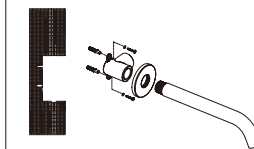
**Installing instruction**



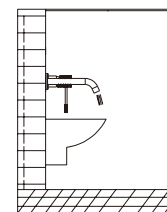
- Step 1. Check all spare parts  
1-pipe  
2-body to handle  
3-handle  
4-cover plate of handle  
5-cover plate of pipe  
6-body to pipe  
7-spare part bag



- Step 2. Dig hole for body to handle  
2.1-Hole size 50\*50mm, depth from 45 to 75mm  
2.2-Dig two 6mm holes with 54mm distance  
2.3- Assemble spare parts as picture shows

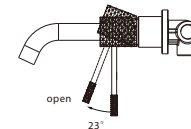
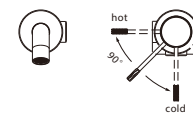


- Step 3. Dig hole for body to pipe  
3.1-Hole size 45\*45mm, depth 40mm  
3.2-Dig two 6mm holes with 35mm distance  
3.3- Assemble spare parts as picture shows



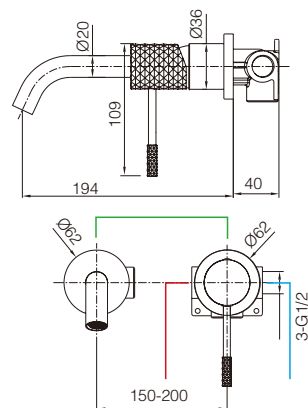
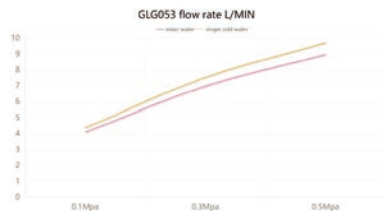
- Step 4. Connect inside pipe and test for leak checking

**Usage function instruction**



## FLOW RATE

Detalles	
FLOW RATE REF	GLG053
mixer water 0.1Mpa(L/MIN)	4.09
mixer water 0.3Mpa(L/MIN)	6.97
mixer water 0.5Mpa(L/MIN)	8.97
singer cold water 0.1Mpa(L/MIN)	4.36
singer cold water 0.3Mpa(L/MIN)	7.52
singer cold water 0.5Mpa(L/MIN)	9.71



Product sizes (cm)	29*17.5*6.7
Weight (kg)	1.7
Guarantee	5 years
Max Preassure (bar)	5
Min Preassure (bar)	0.5
Optimum preassure (bar)	1-4 (Recommended 3)
Max. temperature	85°C
Min temperature	65°C

## CERTIFIES

That all our products, provided that they are used in normal conditions or installed in accordance with current standards, are guaranteed against any manufacturing defect for a period of five years, except for products purchased before January 1, 2020, which will have the mandatory coverage of 2 years from the date of invoice.

### Requirements and exclusions

Failure to comply with the instructions for assembly, use and maintenance of our products on the packaging and in our catalogue and published on our website: [www.imexproducts.es](http://www.imexproducts.es), releases IMEX PRODUCTS, S.L. from any liability.

In any case, the acceptance of the defect by our technical department is necessary. In addition, transport costs will be charged only in the event that on IMEX PRODUCTS, S.L. technician determines the proper functioning of our products.

IMEX PRODUCTS, S.L. will decide to repair the product or replace it. It will be necessary to present the purchase invoice.

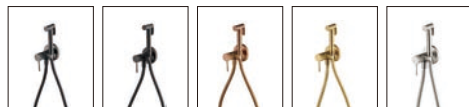
Assembly, maintenance or repairs carried out by non-specialists are excluded from the warranty.

Wearing parts such as hoses, handles, seals, filters, aerators, etc. are not covered by the warranty.

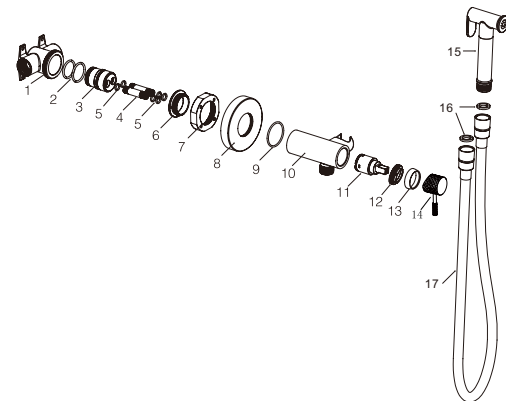




**PRODUCT  
INFORMATION  
SUMMARY**



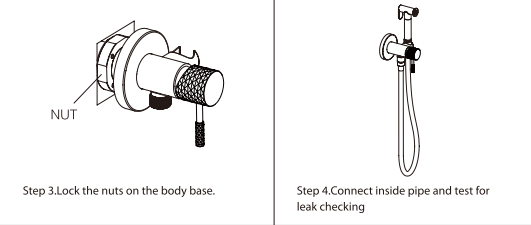
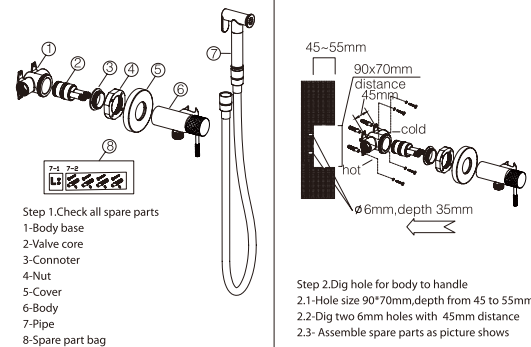
Ref.	EAN	Finish
RDG053	8435668043946	Chrome
RDG053/BGM	8435668043953	Black gun metal
RDG053/NG	8435668043960	Matte black
RDG053/ORC	8435668043984	Brushed rose gold
RDG053/OC	8435668043977	Brushed gold
RDG053/NQ	8435668060318	Brushed nickel



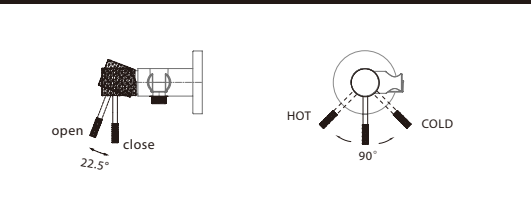
CODE	NAME	MATERIAL	REF
1	Body	Brass	
2	O-ring	NBR	
3	Connect	Brass	
4	Hose	Brass	
5	O-ring	NBR	
6	Connect	Brass	
7	Nut	Brass	
8	Cover	Brass	
9	O-ring	NBR	
10	Body	Brass	
11	Cartridge	25mm	CRT018*
12	Nut	Brass	
13	Decorative cup	ABS	
14	Handle	Brass	
15	Spray gun	SUS 304	SMD005*
16	Rubber	NBR	
17	Hose	SUS 304/PVC	FLX008*

\* CONSULTAR PARA ACABADOS DE COLOR

**Installing instruction**

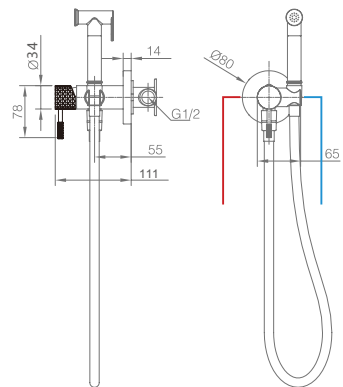
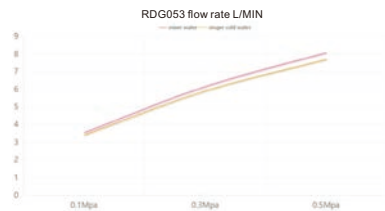


**Usage function instruction**



## FLOW RATE

Detalles	
FLOW RATE REF	RDG053
mixer water 0.1Mpa(L/MIN)	3.54
mixer water 0.3Mpa(L/MIN)	6.15
mixer water 0.5Mpa(L/MIN)	8.08
singer cold water 0.1Mpa(L/MIN)	3.4
singer cold water 0.3Mpa(L/MIN)	5.9
singer cold water 0.5Mpa(L/MIN)	7.69



Product sizes (cm)	19.5*13*15
Weight (kg)	1.7
Guarantee	5 years
Max Preasure (bar)	5
Min Preasure (bar)	0.5
Optimum preasure (bar)	1-4 (Recommended 3)
Max. temperature	85°C
Min temperature	65°C

## CERTIFIES

That all our products, provided that they are used in normal conditions or installed in accordance with current standards, are guaranteed against any manufacturing defect for a period of five years, except for products purchased before January 1, 2020, which will have the mandatory coverage of 2 years from the date of invoice.

### Requirements and exclusions

Failure to comply with the instructions for assembly, use and maintenance of our products on the packaging and in our catalogue and published on our website: [www.imexproducts.es](http://www.imexproducts.es), releases IMEX PRODUCTS, S.L. from any liability.

In any case, the acceptance of the defect by our technical department is necessary. In addition, transport costs will be charged only in the event that on IMEX PRODUCTS, S.L. technician determines the proper functioning of our products.

IMEX PRODUCTS, S.L. will decide to repair the product or replace it. It will be necessary to present the purchase invoice.

Assembly, maintenance or repairs carried out by non-specoalists re excluded from the warranty.

Wearing parts such as hoses, handles, seals, filters, aerators, etc. are not covered by the warranty.

