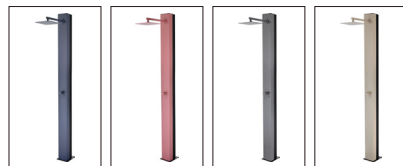


# POOLIMEX

## PHOENIX

Series

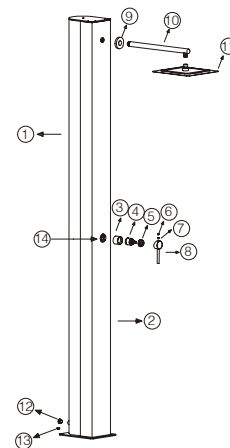


Ref.	EAN	Finish
GPP015/AC	8435668061032	ACERO S.316
GPA015/AAO	8435668061049	AZUL OCEANO S.316
GPP015/ACL	8435668061056	ROSA CORAL S.316
GPA015/AGCB	8435668061063	GRIS COBALTO S.316
GPP015/AMK	8435668061070	MOKA S.316

## POOLIMEX

## PHOENIX

Series



CODE	NAME	MATERIAL	REF
1	Aluminium sheet	AL	
2	Faucet body plate	SUS 304	
3	Cartridge cover	SUS 316	
4	Cartridge	Ø35mm	
5	Cap	SUS 316	
6	Color button	NBR	
7	Screw	SUS 304	
8	Handle	SUS 316	
9	Cover plate of pipe	SUS 316	
10	Pipe	SUS 316	
11	250*250mm shower head	SUS 316	
12	Drain plug	Brass	
13	Screw	SUS 304	
14	Faucet body	SUS 316	

\* CONSULTAR PARA ACABADOS DE COLOR

## POOLIMEX

## PHOENIX

Series

## POOLIMEX

### Installing instruction

Step 1. Embed water pipe underground

Step 2. Connect the inlet pipe

Step 3. Tighten the screws

Step 4. Connect the pipe

Step 5. Connect the shower head

Step 6. Adjust position

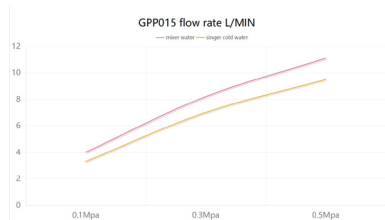
# PRODUCT INFORMATION SUMMARY

**PHOENIX**

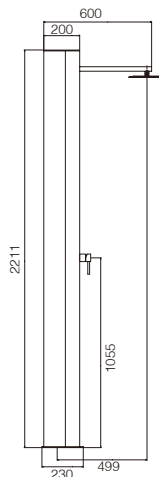
Series

**POOLIMEX****FLOW RATE**

Detalles	
FLOW RATE REF	GPP015
mixer water 0.1Mpa(L/MIN)	4
mixer water 0.3Mpa(L/MIN)	8.2
mixer water 0.5Mpa(L/MIN)	11.1
singer cold water 0.1Mpa(L/MIN)	3.3
singer cold water 0.3Mpa(L/MIN)	7
singer cold water 0.5Mpa(L/MIN)	9.5

**PHOENIX**

Series

**POOLIMEX**

Product sizes (cm)	230*36*31.5
Weight (kg)	18
Guarantee	10 years
Max Preassure (bar)	8
Min Preassure (bar)	1
Optimum preassure (bar)	3-4
Max. temperature	55 °C
Min temperature	0 °C

**PHOENIX**

Series

**POOLIMEX****CERTIFIES**

That all our products, provided that they are used in normal conditions or installed in accordance with current standards, are guaranteed against any manufacturing defect for a period of five years, except for products purchased before January 1, 2020, which will have the mandatory coverage of 2 years from the date of invoice.

Requirements and exclusions

Failure to comply with the instructions for assembly, use and maintenance of our products on the packaging and in our catalogue and published on our website: [www.imexproducts.es](http://www.imexproducts.es), releases IMEX PRODUCTS, S.L. from any liability.

In any case, the acceptance of the defect by our technical department is necessary. In addition, transport costs will be charged only in the event that on IMEX PRODUCTS, S.L. technician determines the proper functioning of our products.

IMEX PRODUCTS, S.L. will decide to repair the product or replace it. It will be necessary to present the purchase invoice.

Assembly, maintenance or repairs carried out by non-specialists are excluded from the warranty.

Wearing parts such as hoses, handles, seals, filters, aerators, etc. are not covered by the warranty.

