

# POOLIMEX

**FLORIDA**  
Series

**POOLIMEX**

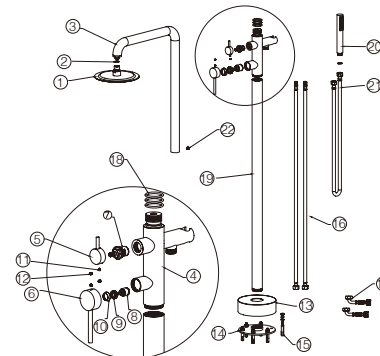
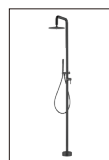
**FLORIDA**  
Series

**POOLIMEX**

**FLORIDA**  
Series

**POOLIMEX**

## PRODUCT INFORMATION SUMMARY



Ref.	EAN	Finish
GPF008/AC	8435668058759	ACERO S.316
GPF008/ANG	8435668058766	NEGRO MATE

CODE	NAME	MATERIAL	REF
1	Ø250mm G1/2 shower head	SUS 316	
2	G1/2 rubber	NBR	
3	upper pipe	SUS 316	
4	faucet body	SUS 316	
5	diverter handle	SUS 316	
6	handle	SUS 316	
7	MINGRUI 3040 cartridge	assembly	Ø20MM
8	JIANCHENG 35P-2 cartridge	assembly	Ø35MM
9	cap	SUS 316	
10	decorative cup	SUS 316	
11	5mm*6mm screw	SUS 304	
12	color button	NBR	
13	Ø160mm cover plate(42mm hole)	SUS 316	
14	Ø152mm fixed seat(42mm hole)	SUS 316	
15	screw	SUS 304	
16	1.3m*Ø12mm G1/2 inlet pipe	SUS 316	
17	G1/2 elbow connection	SUS 316	
18	36*3.2mm rubber	NBR	
19	down pipe	SUS 316	
20	shower hand	SUS 316	
21	1.5m shower hose	assembly	
22	6mm*8mm screw	SUS 304	

\*CONSULTAR PARA ACABADOS DE COLOR

Installing instruction

Step 1.Embedd water pipe underground

Step 2.Connect the inlet pipe

Step 3.Tighten the screws

Step 4.Close the cover

Step 5.Connect the faucet body with the pipes

Step 6.Connect the shower head

FLORIDA

Series

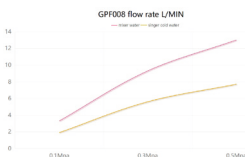
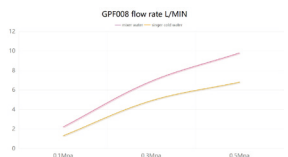
POOLIMEX

**FLOW RATE**

Detalles	
FLOW RATE REF	GPF008
hand shower mixer water 0.1Mpa(L/MIN)	2.2
hand shower mixer water 0.3Mpa(L/MIN)	6.9
hand shower mixer water 0.5Mpa(L/MIN)	9.8
hand shower singer cold water 0.1Mpa(L/MIN)	1.3
hand shower singer cold water 0.3Mpa(L/MIN)	4.9
hand shower singer cold water 0.5Mpa(L/MIN)	6.8
shower head mixer water 0.1Mpa(L/MIN)	3.3
shower head mixer water 0.3Mpa(L/MIN)	9.3
shower head mixer water 0.5Mpa(L/MIN)	13
shower head singer cold water 0.1Mpa(L/MIN)	1.9
shower head singer cold water 0.3Mpa(L/MIN)	5.6
shower head singer cold water 0.5Mpa(L/MIN)	7.7

hand shower

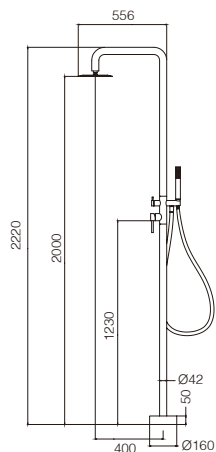
shower head



FLORIDA

Series

POOLIMEX



Product sizes (cm)	126.5*53.7*10.7
Weight (kg)	9.6
Guarantee	10 years
Max Preassure (bar)	8
Min Preassure (bar)	1
Optimum preassure (bar)	3-4
Max. temperature	55 °C
Min temperature	0 °C

FLORIDA

Series

POOLIMEX

**CERTIFIES**

That all our products, provided that they are used in normal conditions or installed in accordance with current standards, are guaranteed against any manufacturing defect for a period of five years, except for products purchased before January 1, 2020, which will have the mand atory coverage of 2 years from the date of invoice.

Requirements and exclusions

Failure to comply with the instructions for assembly, use and maintenance of our products on the packaging and in our catalogue and published on our website: [www.imexproducts.es](http://www.imexproducts.es), releases IMEX PRODUCTS, S.L. from any liability.

In any case, the acceptance of the defect by our technical department is necessary. In addition, transport costs will be charged only in the event that on IMEX PRODUCTS, S.L. technician determines the proper functioning of our products.

IMEX PRODUCTS, S.L. will decide to repair the product or replace it. It will be necessary to present the purchase invoice.

Assemly, maintenance or repairs carried out by non-specoalists re excluded from the warranty.

Wearing parts such as hoses, handles, seals, filters, aerators, etc. are not covered by the warranty.

