

# POOLIMEX

DAKOTA  
Series

POOLIMEX

DAKOTA  
Series

POOLIMEX

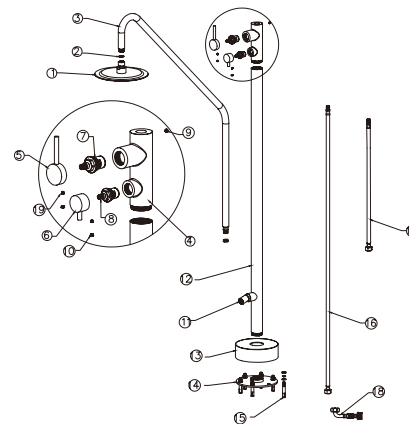
DAKOTA  
Series

POOLIMEX

## PRODUCT INFORMATION SUMMARY



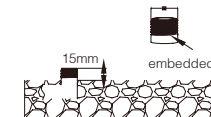
Ref.	EAN	Finish
GPD003/AC	8435668058605	ACERO S.316
GPD003/ANG	8435668058612	NEGRO MATE



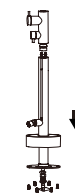
CODE	NAME	MATERIAL	REF
1	Ø250mm G1/2 shower head	SUS 316	
2	G1/2 rubber	NBR	
3	upper pipe	SUS 316	
4	faucet body	SUS 316	
5	handle	SUS 316	
6	handle	SUS 316	
7	MINGRUI HQ2118 cartridge	assembly	Ø23.5MM
8	MINGRUI HQ1028 cartridge	assembly	Ø18.5MM
9	6mm*8mm screw	SUS 304	
10	color button	NBR	
11	effluent	SUS 316	
12	down pipe	SUS 316	
13	Ø160mm cover plate(42mm hole)	SUS 316	
14	Ø152mm fixed seat(42mm hole)	SUS 316	
15	screw	SUS 304	
16	1.3m*Ø12mm inlet pipe	SUS 316	
17	820mm*Ø12mm G1/2 inlet pipe	SUS 316	
18	G1/2 elbow connection	SUS 316	
19	5mm*6mm screw	SUS 304	

\*CONSULTAR PARA ACABADOS DE COLOR

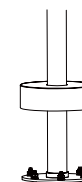
### Installing instruction



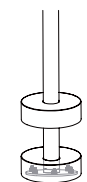
Step 1.Embedd water pipe underground



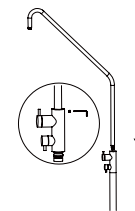
Step 2.Connect the inlet pipe



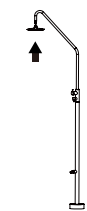
Step 3.Tighten the screws



Step 4.Close the cover



Step 5.Connect the faucet body with the pipes



Step 6.Connect the shower head

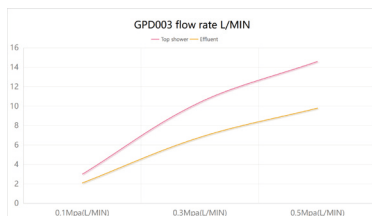
DAKOTA

Series

POOLIMEX

**FLOW RATE**

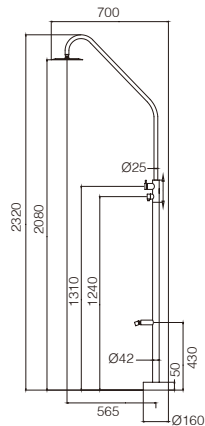
Detalles	
FLOW RATE REF	GPD003
Top shower 0.1Mpa(L/MIN)	3
Top shower 0.3Mpa(L/MIN)	10.4
Top shower 0.5Mpa(L/MIN)	14.6
Effluent 0.1Mpa(L/MIN)	2.1
Effluent 0.3Mpa(L/MIN)	6.8
Effluent 0.5Mpa(L/MIN)	9.8



DAKOTA

Series

POOLIMEX



Product sizes (cm)	126.5*53.7*10.7
Weight (kg)	9.1
Guarantee	10 years
Max Preassure (bar)	8
Min Preassure (bar)	1
Optimum preassure (bar)	3-4
Max. temperature	55 °C
Min temperature	0 °C

DAKOTA

Series

POOLIMEX

**CERTIFIES**

That all our products, provided that they are used in normal conditions or installed in accordance with current standards, are guaranteed against any manufacturing defect for a period of five years, except for products purchased before January 1, 2020, which will have the mand atory coverage of 2 years from the date of invoice.

Requirements and exclusions

Failure to comply with the instructions for assembly, use and maintenance of our products on the packaging and in our catalogue and published on our website: [www.imexproducts.es](http://www.imexproducts.es), releases IMEX PRODUCTS, S.L. from any liability.

In any case, the acceptance of the defect by our technical department is necessary. In addition, transport costs will be charged only in the event that on IMEX PRODUCTS, S.L. technician determines the proper functioning of our products.

IMEX PRODUCTS, S.L. will decide to repair the product or replace it. It will be necessary to present the purchase invoice.

Assembly, maintenance or repairs carried out by non-specoalists re excluded from the warranty.

Wearing parts such as hoses, handles, seals, filters, aerators, etc. are not covered by the warranty.

