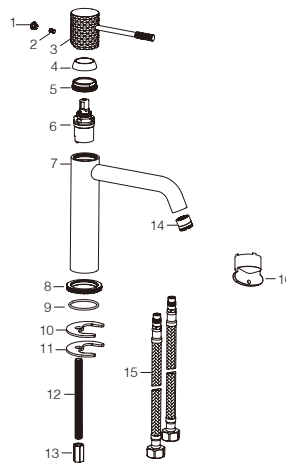


**PRODUCT
INFORMATION
SUMMARY**



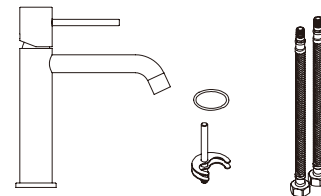
Ref.	EAN	Finish
BDG053-1	8435668034104	Chrome
BDG053-1BGM	8435668034111	Black gun metal
BDG053-1NG	8435668034128	Matte black
BDG053-1ORC	8435668034142	Brushed rose gold
BDG053-1OC	8435668034135	Brushed gold



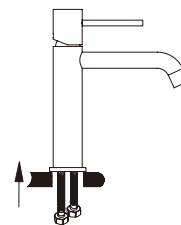
CODE	NAME	MATERIAL	REF
1	Button	ABS	
2	Screw	SUS 304	
3	Handle	Brass	
4	Decorative cap	ABS	
5	Nut	Brass	
6	Cartridge	26mm up	CRT096*
7	Body	Brass	
8	Base	Brass	
9	O-ring	NBR	
10	Rubber washer	NBR	
11	Metal plate	SUS 304	
12	M8-Screw	SUS 304	
13	M8-Nut	Brass	
14	Aerator	ABS/M16.5x1mm	SAT-AIR060*
15	Connecting Pipe	TAQ-PEX-DN6-ACB H3/8-M10X1 L12-500-R8B	SAT-HOSES7*
16	Aerator spanner	Plastic	SAT-KEY*

* CONSULTAR PARA ACABADOS DE COLOR

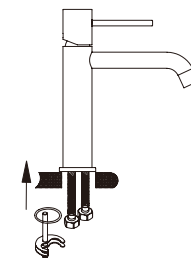
Installing instruction



Step 1. Check all spare parts ready



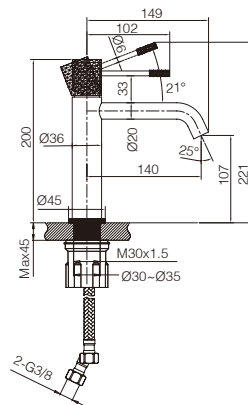
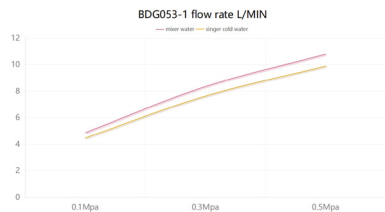
Step 2. Install inlet pipe to faucet body



Step 3. Install screw stick to faucet body

FLOW RATE

Detalles	
FLOW RATE REF	BDG053-1
mixer water 0.1Mpa(L/MIN)	4.86
mixer water 0.3Mpa(L/MIN)	8.34
mixer water 0.5Mpa(L/MIN)	10.78
singer cold water 0.1Mpa(L/MIN)	4.46
singer cold water 0.3Mpa(L/MIN)	7.62
singer cold water 0.5Mpa(L/MIN)	9.88



Product sizes (cm)	30*21*5.9
Weight (kg)	0.92
Guarantee	5 years
Max Preassure (bar)	5
Min Preassure (bar)	0.5
Optimum preassure (bar)	1-4 (Recommended 3)
Max. temperature	85°C
Min temperature	65°C

CERTIFIES

That all our products, provided that they are used in normal conditions or installed in accordance with current standards, are guaranteed against any manufacturing defect for a period of five years, except for products purchased before January 1, 2020, which will have the mand atory coverage of 2 years from the date of invoice.

Requirements and exclusions

Failure to comply with the instructions for assembly, use and maintenance of our products on the packaging and in our catalogue and published on our website: www.imexproducts.es, releases IMEX PRODUCTS, S.L. from any liability.

In any case, the acceptance of the defect by our technical department is necessary. In addition, transport costs will be charged only in the event that on IMEX PRODUCTS, S.L. technician determines the proper functioning of our products.

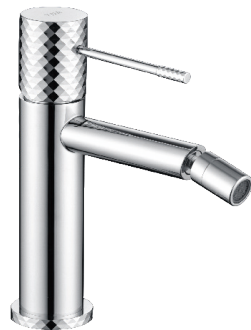
IMEX PRODUCTS, S.L. will decide to repair the product or replace it. It will be necessary to present the purchase invoice.

Assembly, maintenance or repairs carried out by non-specoalists re excluded from the warranty.

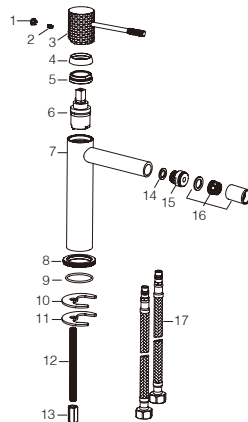
Wearing parts such as hoses, handles, seals, filters, aerators, etc. are not covered by the warranty.



**PRODUCT
INFORMATION
SUMMARY**



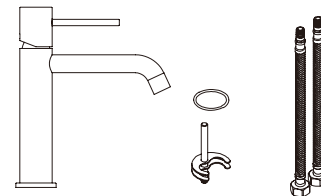
Ref.	EAN	Finish
BDG053-2	8435668034159	Chrome
BDG053-2BGM	8435668034166	Black gun metal
BDG053-2NG	8435668034173	Matte black
BDG053-2ORC	8435668034197	Brushed rose gold
BDG053-2OC	8435668034180	Brushed gold



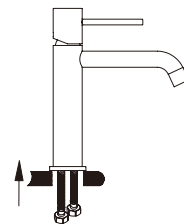
CODE	NAME	MATERIAL	REF
1	Button	ABS	
2	Screw	SUS 304	
3	Handle	Brass	
4	Decorative cap	ABS	
5	Nut	Brass	
6	Cartridge	26mm up	CRT096*
7	Body	Brass	
8	Base	Brass	
9	O-ring	NBR	
10	Rubber plate	NBR	
11	Metal plate	SUS 304	
12	M-8 Screw	SUS 304	
13	M-8 Nut	Brass	
14	Spout gasket	NBR	
15	Spout ASSY		
16	Aerator	ABS / 16mm	SAT-AIR032*
17	Connecting Pipe	TAQ-PEX-DN6-ACB H3/8-M10X1 L12-500-R88	SAT-HOSE57*

* CONSULTAR PARA ACABADOS DE COLOR

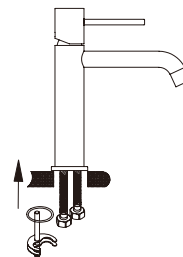
Installing instruction



Step 1. Check all spare parts ready



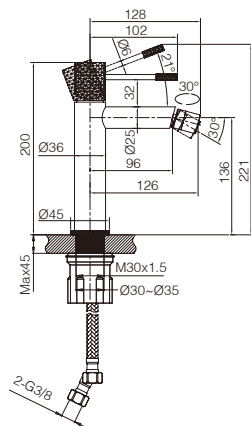
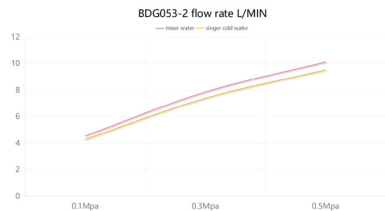
Step 2. Install inlet pipe to faucet body



Step 3. Install screw stick to faucet body

FLOW RATE

Detalles	
FLOW RATE REF	BDG053-2
mixer water 0.1Mpa(L/MIN)	4.54
mixer water 0.3Mpa(L/MIN)	7.85
mixer water 0.5Mpa(L/MIN)	10.12
singer cold water 0.1Mpa(L/MIN)	4.28
singer cold water 0.3Mpa(L/MIN)	7.38
singer cold water 0.5Mpa(L/MIN)	9.52



Product sizes (cm)	26.7*18.1*5.9
Weight (kg)	0.9
Guarantee	5 years
Max Preassure (bar)	5
Min Preassure (bar)	0.5
Optimum preassure (bar)	1-4 (Recommended 3)
Max. temperature	85°C
Min temperature	65°C

CERTIFIES

That all our products, provided that they are used in normal conditions or installed in accordance with current standards, are guaranteed against any manufacturing defect for a period of five years, except for products purchased before January 1, 2020, which will have the mand atory coverage of 2 years from the date of invoice.

Requirements and exclusions

Failure to comply with the instructions for assembly, use and maintenance of our products on the packaging and in our catalogue and published on our website: www.imexproducts.es, releases IMEX PRODUCTS, S.L. from any liability.

In any case, the acceptance of the defect by our technical department is necessary. In addition, transport costs will be charged only in the event that on IMEX PRODUCTS, S.L. technician determines the proper functioning of our products.

IMEX PRODUCTS, S.L. will decide to repair the product or replace it. It will be necessary to present the purchase invoice.

Assembly, maintenance or repairs carried out by non-specoalists re excluded from the warranty.

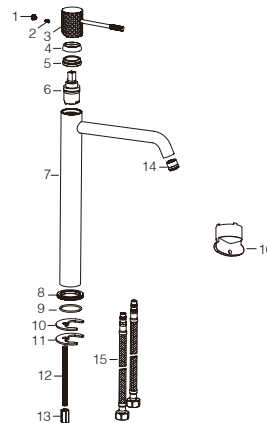
Wearing parts such as hoses, handles, seals, filters, aerators, etc. are not covered by the warranty.



**PRODUCT
INFORMATION
SUMMARY**



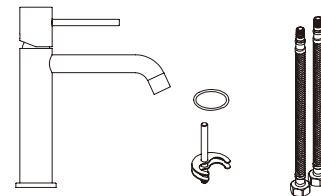
Ref.	EAN	Finish
BDG053-3	8435668034203	Chrome
BDG053-3BGM	8435668034210	Black gun metal
BDG053-3NG	8435668034227	Matte black
BDG053-3ORC	8435668034241	Brushed rose gold
BDG053-3OC	8435668034234	Brushed gold



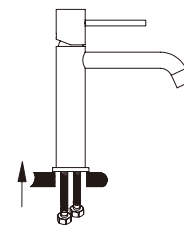
CODE	NAME	MATERIAL	REF
1	Button	ABS	
2	Screw	SUS 304	
3	Handle	Brass	
4	Decorative cap	ABS	
5	Nut	Brass	
6	Cartridge	26mm up	CRT096*
7	Body	Brass	
8	Base	Brass	
9	O-ring	NBR	
10	Rubber plate	NBR	
11	Metal plate	SUS 304	
12	M8-Screw	SUS 304	
13	M8-Nut	Brass	
14	Aerator	ABS / M16.5x1mm	SAT-AIR060*
15	Connecting Pipe	TAQ-PEX-DN6-ACB H3/8-M10X1 L12-500-R&B	SAT-HOSES7*
16	Aerator Spanner	Plastic	SAT-KEY*

* CONSULTAR PARA ACABADOS DE COLOR

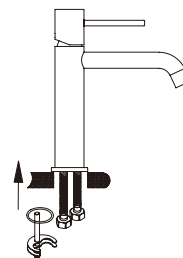
Installing instruction



Step 1. Check all spare parts ready



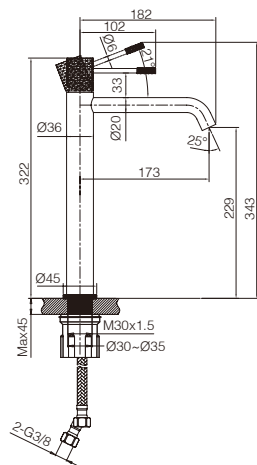
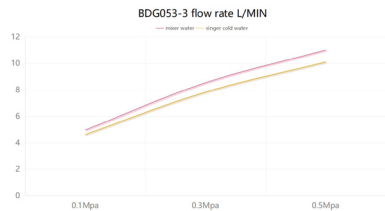
Step 2. Install inlet pipe to faucet body



Step 3. Install screw stick to faucet body

FLOW RATE

Detalles	
FLOW RATE REF	BDG053-3
mixer water 0.1Mpa(L/MIN)	4.95
mixer water 0.3Mpa(L/MIN)	8.53
mixer water 0.5Mpa(L/MIN)	11.01
singer cold water 0.1Mpa(L/MIN)	4.61
singer cold water 0.3Mpa(L/MIN)	7.82
singer cold water 0.5Mpa(L/MIN)	10.1



Product sizes (cm)	39*21*5.9
Weight (kg)	1.2
Guarantee	5 years
Max Preassure (bar)	5
Min Preassure (bar)	0.5
Optimum preassure (bar)	1-4 (Recommended 3)
Max. temperature	85°C
Min temperature	65°C

CERTIFIES

That all our products, provided that they are used in normal conditions or installed in accordance with current standards, are guaranteed against any manufacturing defect for a period of five years, except for products purchased before January 1, 2020, which will have the mand atory coverage of 2 years from the date of invoice.

Requirements and exclusions

Failure to comply with the instructions for assembly, use and maintenance of our products on the packaging and in our catalogue and published on our website: www.imexproducts.es, releases IMEX PRODUCTS, S.L. from any liability.

In any case, the acceptance of the defect by our technical department is necessary. In addition, transport costs will be charged only in the event that on IMEX PRODUCTS, S.L. technician determines the proper functioning of our products.

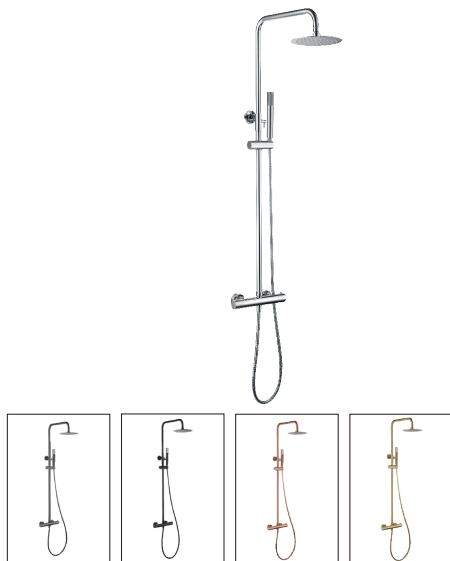
IMEX PRODUCTS, S.L. will decide to repair the product or replace it. It will be necessary to present the purchase invoice.

Assembly, maintenance or repairs carried out by non-specoalists re excluded from the warranty.

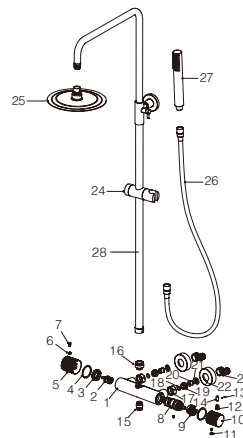
Wearing parts such as hoses, handles, seals, filters, aerators, etc. are not covered by the warranty.



**PRODUCT
INFORMATION
SUMMARY**



Ref.	EAN	Finish
BTG053	8435668034876	Chrome
BTG053-BGM	8435668034883	Black gun metal
BTG053-NG	8435668034890	Matte black
BTG053-ORC	8435668034913	Brushed rose gold
BTG053-OC	8435668034906	Brushed gold



CODE	NAME	MATERIAL	REF	CODE	NAME	MATERIAL	REF
1	Body	Brass		20	Valve	ABS	
2	Cartridge	25mm up		21	Rubber washer	NBR	
3	Nut	Brass		22	Cover	SUS 304	
4	Washer	POM		23	Cabrio leg	SUS 304	
5	Handle	Brass		24	Slider	ABS	RR0014*
6	Screw	SUS 304		25	Shower head	SUS 304	RDN001*
7	Handle lever	Brass		26	Hose	SUS 304 / PVC	FLX005*
8	Cartridge	32mm	CRT012*	27	Shower hand	ABS	MDR015*
9	Washer	POM		28	Pipe	SUS 304	
10	Handle	Brass					
11	Cover	ABS					
12	Spring	SUS 304					
13	Pin	SUS 304					
14	Handle lever	Brass					
15	Connect	Brass					
16	Connect	Brass					
17	Nut	Brass					
18	O-ring	NBR					
19	Screw	SUS 304					

* CONSULTAR PARA ACABADOS DE COLOR

Installing instruction

Step 1. Connect curved leg with the inlet pipe inside the wall

Step 2. Connect decorate cover to curved leg

Step 3. Install shower faucet properly, and connect to curved leg on the wall

Step 4. Install shower pipe according to the distance of fix part

Step 5. Install shower hand and shower head to the set

Step 6. Test function of shower set, clean the set

Usage function instruction

Hot 38° Cold

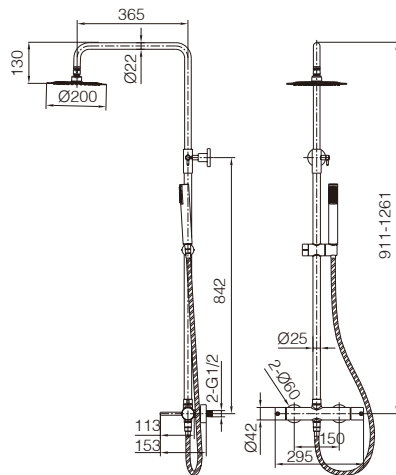
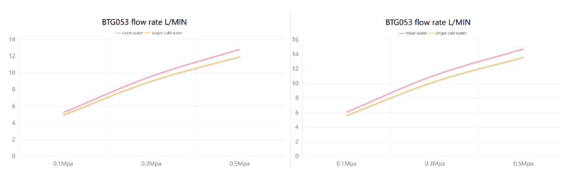
SHOWER HEAD OFF SHOWER HAND

FLOW RATE

Detalles	
FLOW RATE REF	BTG053
hand shower mixer water 0.1Mpa(L/MIN)	5.27
hand shower mixer water 0.3Mpa(L/MIN)	9.62
hand shower mixer water 0.5Mpa(L/MIN)	12.84
hand shower singer cold water 0.1Mpa(L/MIN)	4.95
hand shower singer cold water 0.3Mpa(L/MIN)	9.02
hand shower singer cold water 0.5Mpa(L/MIN)	11.95
shower head mixer water 0.1Mpa(L/MIN)	6.1
shower head mixer water 0.3Mpa(L/MIN)	11.16
shower head mixer water 0.5Mpa(L/MIN)	14.76
shower head singer cold water 0.1Mpa(L/MIN)	5.63
shower head singer cold water 0.3Mpa(L/MIN)	10.28
shower head singer cold water 0.5Mpa(L/MIN)	13.6

hand shower

shower head



Product sizes (cm)	42.5*13.3*90
Weight (kg)	5.6
Guarantee	5 years
Max Preassure (bar)	5
Min Preassure (bar)	0.5
Optimum preassure (bar)	1-4 (Recommended 3)
Max. temperature	85°C
Min temperature	65°C

CERTIFIES

That all our products, provided that they are used in normal conditions or installed in accordance with current standards, are guaranteed against any manufacturing defect for a period of five years, except for products purchased before January 1, 2020, which will have the mand atory coverage of 2 years from the date of invoice.

Requirements and exclusions

Failure to comply with the instructions for assembly, use and maintenance of our products on the packaging and in our catalogue and published on our website: www.imexproducts.es, releases IMEX PRODUCTS, S.L. from any liability.

In any case, the acceptance of the defect by our technical department is necessary. In addition, transport costs will be charged only in the event that on IMEX PRODUCTS, S.L. technician determines the proper functioning of our products.

IMEX PRODUCTS, S.L. will decide to repair the product or replace it. It will be necessary to present the purchase invoice.

Assembly, maintenance or repairs carried out by non-specoalists re excluded from the warranty.

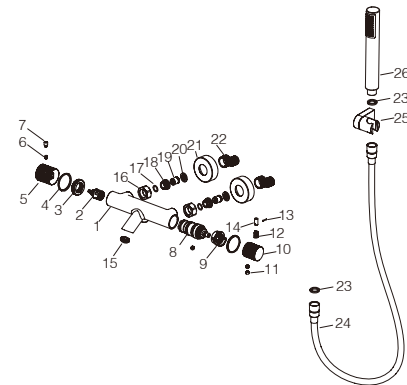
Wearing parts such as hoses, handles, seals, filters, aerators, etc. are not covered by the warranty.



PRODUCT INFORMATION SUMMARY



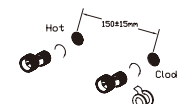
Ref.	EAN	Finish
BTG053-4	8435668042857	Chrome
BTG053-4BGM	8435668042864	Black gun metal
BTG053-4NG	8435668042871	Matte black
BTG053-4ORC	8435668042895	Brushed rose gold
BTG053-4OC	8435668042888	Brushed gold



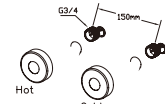
CODE	NAME	MATERIAL	REF	CODE	NAME	MATERIAL	REF
1	Body	Brass		20	Rubber washer	NBR	
2	Cartridge	25mm up		21	Cover	SUS 304	
3	Nut	Brass		22	Cabrio leg	SUS 304	
4	Washer	POM		23	Rubber washer	NBR	
5	Handle	Brass		24	Hose	SUS 304 / PVC	FLX010*
6	Screw	SUS 304		25	Shower seat	ABS	SMD007*
7	Handle lever	Brass		26	Shower hand	ABS	MDR015*
8	Cartridge	32mm	CRT012*				
9	Washer	POM					
10	Handle	Brass					
11	Cover	ABS					
12	Spring	SUS 304					
13	Pin	SUS 304					
14	Handle lever	Brass					
15	Aerator	24mm					
16	Nut	Brass					
17	O-ring	NBR					
18	Screw	SUS 304					
19	Valve	ABS					

* CONSULTAR PARA ACABADOS DE COLOR

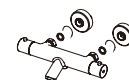
Installing instruction



Step 1. Connect curved leg with the inlet pipe inside the wall



Step 2. Connect decorative cover to curved leg

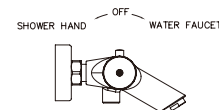
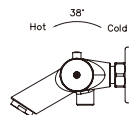


Step 3. Install shower faucet properly, and connect to curved leg on the wall



Step 4. Test function of shower set, clean the set

Usage function instruction

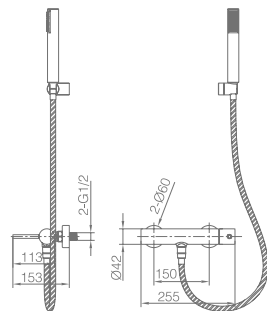
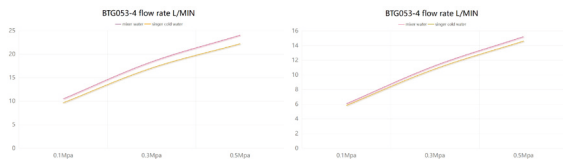


FLOW RATE

Detailles	
FLOW RATE REF	BTG053-4
water outlet mixer water 0.1Mpa(L/MIN)	10.48
water outlet mixer water 0.3Mpa(L/MIN)	18.37
water outlet mixer water 0.5Mpa(L/MIN)	24.02
water outlet singer cold water 0.1Mpa(L/MIN)	9.65
water outlet singer cold water 0.3Mpa(L/MIN)	17.04
water outlet singer cold water 0.5Mpa(L/MIN)	22.2
hand shower mixer water 0.1Mpa(L/MIN)	6.05
hand shower mixer water 0.3Mpa(L/MIN)	11.24
hand shower mixer water 0.5Mpa(L/MIN)	15.2
hand shower singer cold water 0.1Mpa(L/MIN)	5.82
hand shower singer cold water 0.3Mpa(L/MIN)	10.8
hand shower singer cold water 0.5Mpa(L/MIN)	14.6

water outlet

hand shower



Product sizes (cm)	33*19.5*10.5
Weight (kg)	2.5
Guarantee	5 years
Max Preassure (bar)	5
Min Preassure (bar)	0.5
Optimum preassure (bar)	1-4 (Recommended 3)
Max. temperature	85°C
Min temperature	65°C

CERTIFIES

That all our products, provided that they are used in normal conditions or installed in accordance with current standards, are guaranteed against any manufacturing defect for a period of five years, except for products purchased before January 1, 2020, which will have the mandatory coverage of 2 years from the date of invoice.

Requirements and exclusions

Failure to comply with the instructions for assembly, use and maintenance of our products on the packaging and in our catalogue and published on our website: www.imexproducts.es, releases IMEX PRODUCTS, S.L. from any liability.

In any case, the acceptance of the defect by our technical department is necessary. In addition, transport costs will be charged only in the event that an IMEX PRODUCTS, S.L. technician determines the proper functioning of our products.

IMEX PRODUCTS, S.L. will decide to repair the product or replace it. It will be necessary to present the purchase invoice.

Assembly, maintenance or repairs carried out by non-specialists are excluded from the warranty.

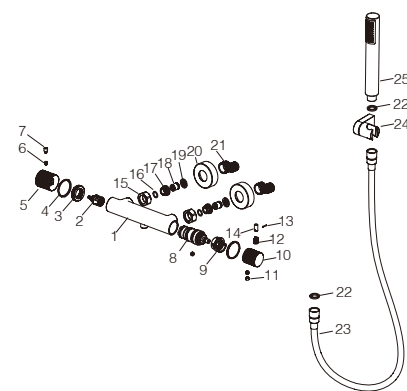
Wearing parts such as hoses, handles, seals, filters, aerators, etc. are not covered by the warranty.



**PRODUCT
INFORMATION
SUMMARY**



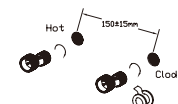
Ref.	EAN	Finish
BTG053-5	8435668042901	Chrome
BTG053-5BGM	8435668042918	Black gun metal
BTG053-5NG	8435668042925	Matte black
BTG053-5ORC	8435668042949	Brushed rose gold
BTG053-5OC	8435668042932	Brushed gold



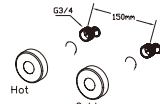
CODE	NAME	MATERIAL	REF	CODE	NAME	MATERIAL	REF
1	Body	Brass		20	Cover	SUS 304	
2	Cartridge	21mm		21	Cabrio leg	SUS 304	
3	Nut	Brass		22	Rubber washer	NBR	
4	Washer	POM		23	Hose	SUS 304 / PVC	FLX005*
5	Handle	Brass		24	Shower seat	ABS	SMD007*
6	Screw	SUS 304		25	Shower hand	ABS	MDR015*
7	Handle lever	Brass					
8	Cartridge	32mm	CRT012*				
9	Washer	POM					
10	Handle	Brass					
11	Cover	ABS					
12	Spring	SUS 304					
13	Pin	SUS 304					
14	Handle lever	Brass					
15	Nut	Brass					
16	O-ring	NBR					
17	Screw	SUS 304					
18	Valve	ABS					
19	Rubber washer	NBR					

* CONSULTAR PARA ACABADOS DE COLOR

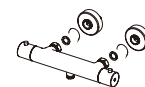
Installing instruction



Step 1. Connect curved leg with the inlet pipe inside the wall



Step 2. Connect decorative cover to curved leg

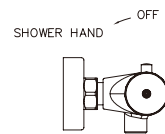
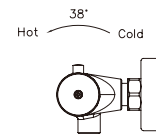


Step 3. Install shower faucet properly, and connect to curved leg on the wall



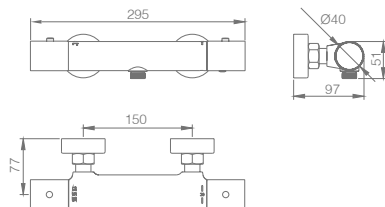
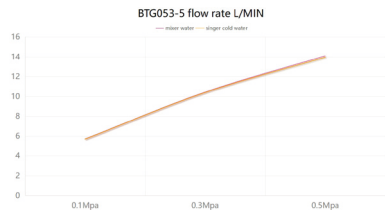
Step 4. Test function of shower set, clean the set

Usage function instruction



FLOW RATE

Detalles	
FLOW RATE REF	BTG053-5
mixer water 0.1Mpa(L/MIN)	5.71
mixer water 0.3Mpa(L/MIN)	10.44
mixer water 0.5Mpa(L/MIN)	14.1
singer cold water 0.1Mpa(L/MIN)	5.68
singer cold water 0.3Mpa(L/MIN)	10.39
singer cold water 0.5Mpa(L/MIN)	13.96



Product sizes (cm)	33*19.5*10.5
Weight (kg)	2.2
Guarantee	5 years
Max Preassure (bar)	5
Min Preassure (bar)	0.5
Optimum preassure (bar)	1-4 (Recommended 3)
Max. temperature	85°C
Min temperature	65°C

CERTIFIES

That all our products, provided that they are used in normal conditions or installed in accordance with current standards, are guaranteed against any manufacturing defect for a period of five years, except for products purchased before January 1, 2020, which will have the mand atory coverage of 2 years from the date of invoice.

Requirements and exclusions

Failure to comply with the instructions for assembly, use and maintenance of our products on the packaging and in our catalogue and published on our website: www.imexproducts.es, releases IMEX PRODUCTS, S.L. from any liability.

In any case, the acceptance of the defect by our technical department is necessary. In addition, transport costs will be charged only in the event that on IMEX PRODUCTS, S.L. technician determines the proper functioning of our products.

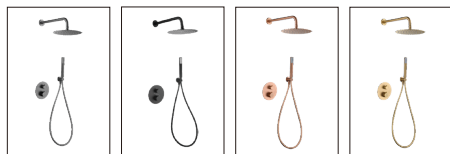
IMEX PRODUCTS, S.L. will decide to repair the product or replace it. It will be necessary to present the purchase invoice.

Assembly, maintenance or repairs carried out by non-specoalists re excluded from the warranty.

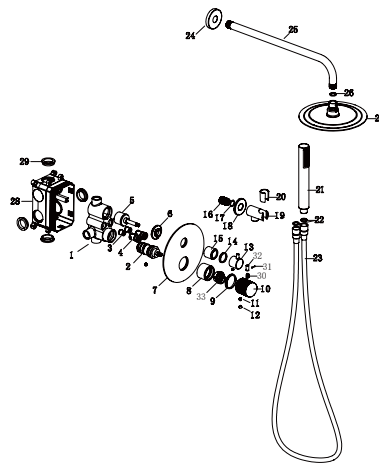
Wearing parts such as hoses, handles, seals, filters, aerators, etc. are not covered by the warranty.



PRODUCT INFORMATION SUMMARY



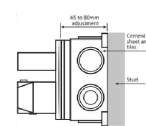
Ref.	EAN	Finish
GTG053	8435668043205	Chrome
GTG053-BGM	8435668043212	Black gun metal
GTG053-NG	8435668043229	Matte black
GTG053-ORC	8435668043243	Brushed rose gold
GTG053-OC	8435668043236	Brushed gold



CODE	NAME	MATERIAL	REF	CODE	NAME	MATERIAL	REF
1	Body	Brass		20	Plastic washer	Plastic	
2	Cartridge	32mm	CRT012*	21	Shower hand	Plastic	MDR015*
3	Check valve	ASSY		22	Rubber ring	NBR	
4	Control valve	ASSY		23	Hose	SUS 304 / PVC	FLX005*
5	Cartridge	33mm up	CRT067*	24	Cover	SUS 304	
6	Nut	Brass		25	Hose	SUS 304	BPR001*
7	Decorative plate	SUS 304		26	Rubber ring	NBR	
8	Cartridge cover	Brass		27	Shower head	SUS 304	RDN002*
9	Plastic washer	Plastic		28	BOX	ABS	
10	Handle	Brass		29	Rubber ring	NBR	
11	Screw	SUS 304		30	Spring	SUS 304	
12	Button	ABS		31	Pin	SUS 304	
13	Handle	Brass		32	Handle lever	Brass	
14	Plastic washer	Plastic		33	Washer	POM	
15	Cover	Brass					
16	Connect	Brass					
17	O-ring	NBR					
18	Cover	Brass					
19	Body	Brass					

* CONSULTAR PARA ACABADOS DE COLOR

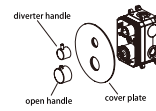
Installing instruction



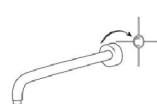
Step 1. Connect curved leg with the inlet pipe inside the wall



Step 2. Connect decorative cover to curved leg



Step 3. Install shower faucet properly and connect to curved leg on the wall



Step 4. Install shower pipe according to the distance of fix part



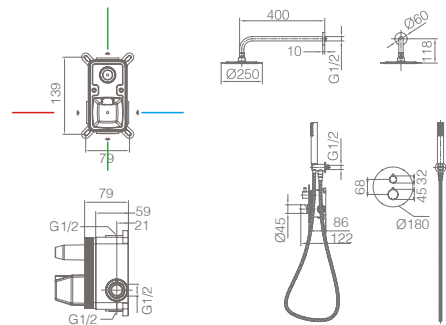
Step 5. Install shower hand and shower head to the set



Step 6. Test function of shower set, clean the set

FLOW RATE

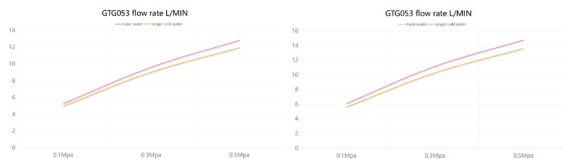
Detalles	
FLOW RATE REF	GTG053
hand shower mixer water 0.1Mpa(L/MIN)	5.27
hand shower mixer water 0.3Mpa(L/MIN)	9.62
hand shower mixer water 0.5Mpa(L/MIN)	12.84
hand shower singer cold water 0.1Mpa(L/MIN)	4.95
hand shower singer cold water 0.3Mpa(L/MIN)	9.02
hand shower singer cold water 0.5Mpa(L/MIN)	11.95
shower head mixer water 0.1Mpa(L/MIN)	6.1
shower head mixer water 0.3Mpa(L/MIN)	11.16
shower head mixer water 0.5Mpa(L/MIN)	14.76
shower head singer cold water 0.1Mpa(L/MIN)	5.63
shower head singer cold water 0.3Mpa(L/MIN)	10.28
shower head singer cold water 0.5Mpa(L/MIN)	13.6



Product sizes (cm)	43*30*14
Weight (kg)	4.8
Guarantee	5 years
Max Preassure (bar)	5
Min Preassure (bar)	0.5
Optimum preassure (bar)	1-4 (Recommended 3)
Max. temperature	85°C
Min temperature	65°C

hand shower

shower head



CERTIFIES

That all our products, provided that they are used in normal conditions or installed in accordance with current standards, are guaranteed against any manufacturing defect for a period of five years, except for products purchased before January 1, 2020, which will have the mandatory coverage of 2 years from the date of invoice.

Requirements and exclusions

Failure to comply with the instructions for assembly, use and maintenance of our products on the packaging and in our catalogue and published on our website: www.imexproducts.es, releases IMEX PRODUCTS, S.L. from any liability.

In any case, the acceptance of the defect by our technical department is necessary. In addition, transport costs will be charged only in the event that on IMEX PRODUCTS, S.L. technician determines the proper functioning of our products.

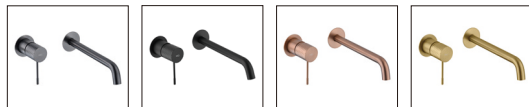
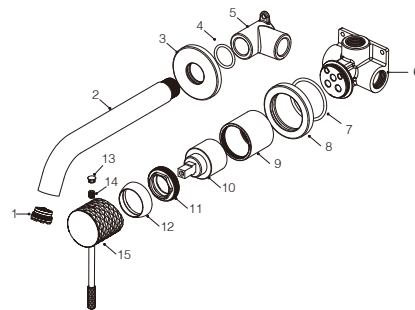
IMEX PRODUCTS, S.L. will decide to repair the product or replace it. It will be necessary to present the purchase invoice.

Assembly, maintenance or repairs carried out by non-specialists are excluded from the warranty.

Wearing parts such as hoses, handles, seals, filters, aerators, etc. are not covered by the warranty.



**PRODUCT
INFORMATION
SUMMARY**

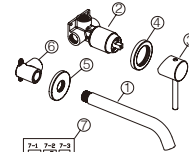


Ref.	EAN	Finish
GLG053	8435668035224	Chrome
GLG053-BGM	8435668035231	Black gun metal
GLG053-NG	8435668035248	Matte black
GLG053-ORC	8435668035262	Brushed rose gold
GLG053-OC	8435668035255	Brushed gold

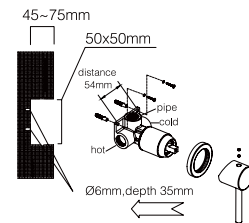
CODE	NAME	MATERIAL	REF
1	Aerator	16.5x1mm	SAT-AIR060*
2	Outlet pipe	Brass	
3	Cover	Brass	
4	O-ring	NBR	
5	Connector	Brass	
6	Body	Brass	
7	O-ring	NBR	
8	Cover	Brass	
9	Cartridge cover	Brass	
10	Cartridge	Ø25mm	CRT080*
11	Nut	Brass	
12	Cover	ABS	
13	Screw	SUS 304	
14	Cover	ABS	
15	Handle	Brass	

* CONSULTAR PARA ACABADOS DE COLOR

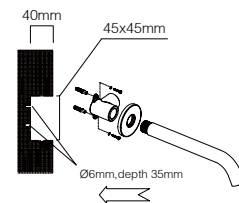
Installing instruction



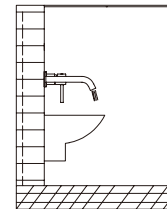
- Step 1. Check all spare parts
 1-pipe
 2-body to handle
 3-handle
 4-cover plate of handle
 5-cover plate of pipe
 6-body to pipe
 7-spare part bag



- Step 2. Dig hole for body to handle
 2.1-Hole size 50*50mm, depth from 45 to 75mm
 2.2-Dig two 6mm holes with 54mm distance
 2.3- Assemble spare parts as picture shows



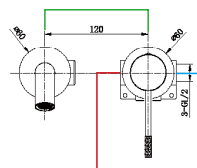
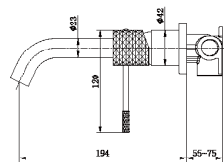
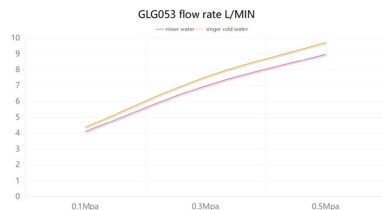
- Step 3. Dig hole for body to pipe
 3.1-Hole size 45*45mm, depth 40mm
 3.2-Dig two 6mm holes with 35mm distance
 3.3- Assemble spare parts as picture shows



- Step 4. Connect inside pipe and test for leak checking

FLOW RATE

Detalles	
FLOW RATE REF	GLG053
mixer water 0.1Mpa(L/MIN)	4.09
mixer water 0.3Mpa(L/MIN)	6.97
mixer water 0.5Mpa(L/MIN)	8.97
singer cold water 0.1Mpa(L/MIN)	4.36
singer cold water 0.3Mpa(L/MIN)	7.52
singer cold water 0.5Mpa(L/MIN)	9.71



Product sizes (cm)	29*17,5*6,7
Weight (kg)	1.7
Guarantee	5 years
Max Preassure (bar)	5
Min Preassure (bar)	0.5
Optimum preassure (bar)	1-4 (Recommended 3)
Max. temperature	85°C
Min temperature	65°C

CERTIFIES

That all our products, provided that they are used in normal conditions or installed in accordance with current standards, are guaranteed against any manufacturing defect for a period of five years, except for products purchased before January 1, 2020, which will have the mand atory coverage of 2 years from the date of invoice.

Requirements and exclusions

Failure to comply with the instructions for assembly, use and maintenance of our products on the packaging and in our catalogue and published on our website: www.imexproducts.es, releases IMEX PRODUCTS, S.L. from any liability.

In any case, the acceptance of the defect by our technical department is necessary. In addition, transport costs will be charged only in the event that on IMEX PRODUCTS, S.L. technician determines the proper functioning of our products.

IMEX PRODUCTS, S.L. will decide to repair the product or replace it. It will be necessary to present the purchase invoice.

Assembly, maintenance or repairs carried out by non-specoalists re excluded from the warranty.

Wearing parts such as hoses, handles, seals, filters, aerators, etc. are not covered by the warranty.

