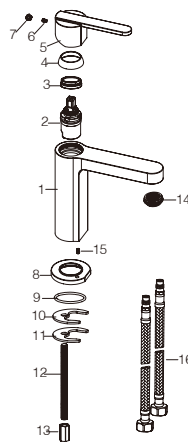


**PRODUCT
INFORMATION
SUMMARY**



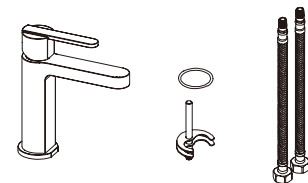
Ref.	EAN	Finish
BDR001-1	8435668005531	Chrome
BDR001-1NG	8435668034371	Matte black
BDR001-1OC	8435668034388	Brushed gold
BDR001-1ORC	8435668034395	Brushed rose gold



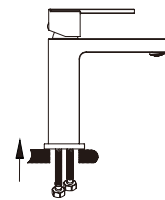
CODE	NAME	MATERIAL	REF
1	Main body	Brass	
2	Cartridge	28mm up	CRT042*
3	Cartridge cover	Brass	
4	Decorative cover	ABS	
5	Handle	zinc	
6	Screw	SUS 304	
7	Button	ABS	
8	Base	Brass	
9	O-ring	NBR	
10	Rubber washer	NBR	
11	Metal washer	SUS 304	
12	M8-screw	SUS 304	
13	M8-nut	Brass	
14	Aerator	ABS/M24X1mm	SAT-AIR019*
15	Screw	SUS 304	
16	Connecting pipe	TAQ-PEX-DN6-ACB H3/8-M10X1 L12-500-R&B	SAT-HOSES7*

* CONSULTAR PARA ACABADOS DE COLOR

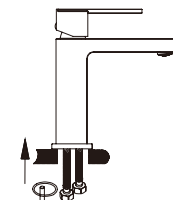
Installing instruction



Step 1. Check all spare parts ready



Step 2. Install inlet pipe to faucet body

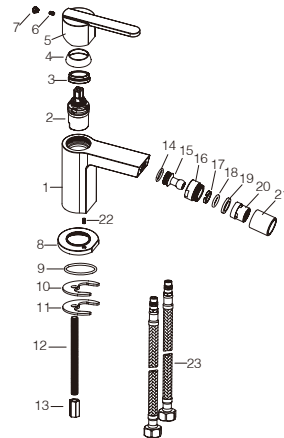


Step 3. Install screw stick to faucet body

PRODUCT INFORMATION SUMMARY



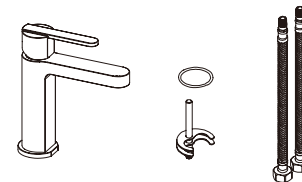
Ref.	EAN	Finish
BDR001-2	8435668005548	Chrome
BDR001-2NG	8435668005500	Matte black
BDR001-2OC	8435668034401	Brushed gold
BDR001-2ORC	8435668034418	Brushed rose gold



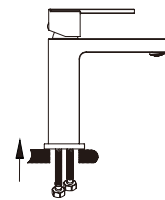
CODE	NAME	MATERIAL	REF	CODE	NAME	MATERIAL	REF
1	Body	Brass	20	20	Aerator	ABS/22mm	SAT-AIR027*
2	Cartridge	28mm up	CRT042*	21	Aerator cover	Brass	
3	Cartridge cover	Brass		22	Screw	SUS 304	
4	Decorative cover	ABS		23	Connecting pipe	TAQ-PEX-DWG-ACB H3/8-M10X1 L12-500-R&B	SAT-HOSES7*
5	Handle	Zinc					
6	Screw	SUS 304					
7	Button	ABS					
8	Base	Brass					
9	O-ring	NBR					
10	Rubber washer	NBR					
11	Metal washer	SUS 304					
12	Screw	SUS 304					
13	Net	Brass					
14	O-ring	NBR					
15	Connector	Brass					
16	Connector	Brass					
17	Washer	POM					
18	O-ring	NBR					
19	Rubber ring	NBR					

* CONSULTAR PARA ACABADOS DE COLOR

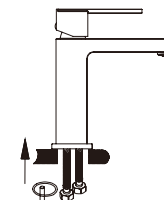
Installing instruction



Step 1. Check all spare parts ready



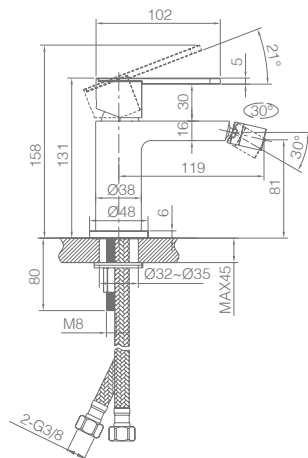
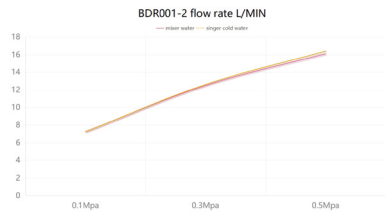
Step 2. Install inlet pipe to faucet body



Step 3. Install screw stick to faucet body

FLOW RATE

Detalles	
FLOW RATE REF	BDR001-2
mixer water 0.1Mpa(L/MIN)	7.25
mixer water 0.3Mpa(L/MIN)	12.5
mixer water 0.5Mpa(L/MIN)	16.1
singer cold water 0.1Mpa(L/MIN)	7.23
singer cold water 0.3Mpa(L/MIN)	12.6
singer cold water 0.5Mpa(L/MIN)	16.4



Product sizes (cm)	26.7*18.1*5.9
Weight (kg)	1.05
Guarantee	5 years
Max Preassure (bar)	5
Min Preassure (bar)	0.5
Optimum preassure (bar)	1-4 (Recommended 3)
Max. temperature	85°C
Min temperature	65°C

CERTIFIES

That all our products, provided that they are used in normal conditions or installed in accordance with current standards, are guaranteed against any manufacturing defect for a period of five years, except for products purchased before January 1, 2020, which will have the mand atory coverage of 2 years from the date of invoice.

Requirements and exclusions

Failure to comply with the instructions for assembly, use and maintenance of our products on the packaging and in our catalogue and published on our website: www.imexproducts.es, releases IMEX PRODUCTS, S.L. from any liability.

In any case, the acceptance of the defect by our technical department is necessary. In addition, transport costs will be charged only in the event that on IMEX PRODUCTS, S.L. technician determines the proper functioning of our products.

IMEX PRODUCTS, S.L. will decide to repair the product or replace it. It will be necessary to present the purchase invoice.

Assembly, maintenance or repairs carried out by non-specoalists re excluded from the warranty.

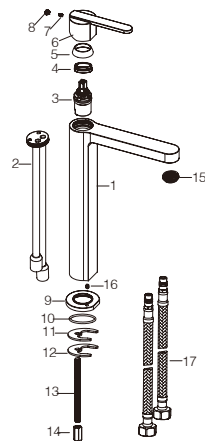
Wearing parts such as hoses, handles, seals, filters, aerators, etc. are not covered by the warranty.



PRODUCT INFORMATION SUMMARY



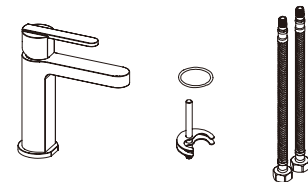
Ref.	EAN	Finish
BDR001-3	8435668002257	Chrome
BDR001-3NG	8435668034425	Matte black
BDR001-3OC	8435668034432	Brushed gold
BDR001-3ORC	8435668034449	Brushed rose gold



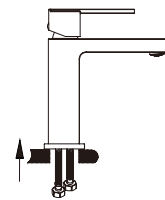
CODE	NAME	MATERIAL	REF
1	Body	Brass	
2	Core print seat	Brass	
3	Cartridge	28mm	CRT042*
4	Cartridge cover	Brass	
5	Decorative cover	ABS	
6	Handle	Zinc	
7	Screw	SUS304	
8	Button	ABS	
9	Base	Brass	
10	O-ring	NBR	
11	Rubber washer	NBR	
12	Metal washer	SUS 304	
13	M8-screw	SUS 304	
14	M8-nut	Brass	
15	Aerator	ABS/M24X1mm	SAT-AIR019*
16	Screw	SUS 304	
17	Connecting pipe	TAQ-PEX-DN6-ACB H3/8-M10X1 L12-500-R&B	SAT-HOSES7*

* CONSULTAR PARA ACABADOS DE COLOR

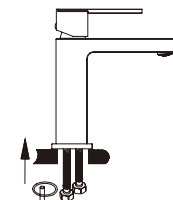
Installing instruction



Step 1. Check all spare parts ready



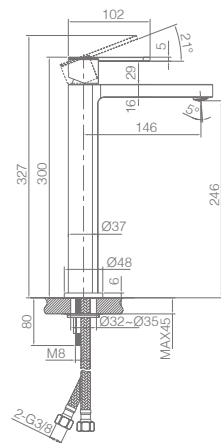
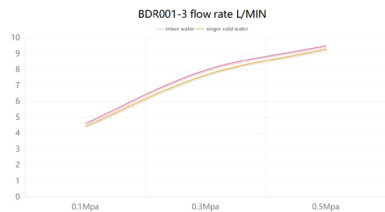
Step 2. Install inlet pipe to faucet body



Step 3. Install screw stick to faucet body

FLOW RATE

Detalles	
FLOW RATE REF	BDR001-3
mixer water 0.1Mpa(L/MIN)	4.62
mixer water 0.3Mpa(L/MIN)	7.96
mixer water 0.5Mpa(L/MIN)	9.5
singer cold water 0.1Mpa(L/MIN)	4.43
singer cold water 0.3Mpa(L/MIN)	7.65
singer cold water 0.5Mpa(L/MIN)	9.29



Product sizes (cm)	39*21*5.9
Weight (kg)	1.55
Guarantee	5 years
Max Preassure (bar)	5
Min Preassure (bar)	0.5
Optimum preassure (bar)	1-4 (Recommended 3)
Max. temperature	85°C
Min temperature	65°C

CERTIFIES

That all our products, provided that they are used in normal conditions or installed in accordance with current standards, are guaranteed against any manufacturing defect for a period of five years, except for products purchased before January 1, 2020, which will have the mand atory coverage of 2 years from the date of invoice.

Requirements and exclusions

Failure to comply with the instructions for assembly, use and maintenance of our products on the packaging and in our catalogue and published on our website: www.imexproducts.es, releases IMEX PRODUCTS, S.L. from any liability.

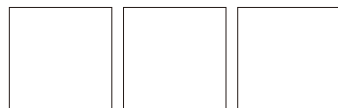
In any case, the acceptance of the defect by our technical department is necessary. In addition, transport costs will be charged only in the event that on IMEX PRODUCTS, S.L. technician determines the proper functioning of our products.

IMEX PRODUCTS, S.L. will decide to repair the product or replace it. It will be necessary to present the purchase invoice.

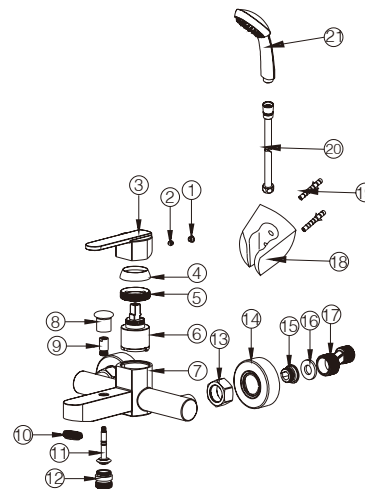
Assembly, maintenance or repairs carried out by non-specoalists re excluded from the warranty.

Wearing parts such as hoses, handles, seals, filters, aerators, etc. are not covered by the warranty.





Ref.	EAN	Finish
BDR001-4	8435668005517	Chrome
BDR001-4NG	8435668034456	Matte black
BDR001-4OC	8435668034463	Brushed gold
BDR001-4ORC	8435668034470	Brushed rose gold

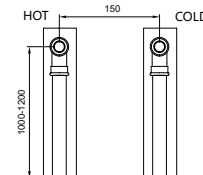


CODE	NAME	MATERIAL	REF	CODE	NAME	MATERIAL	REF
1	Button	ABS		12	Connect or	SUS 304	
2	Screw	SUS 304		13	Hexagon nut	H59	
3	Handle	zinc		14	plate	SUS 304	
4	Decorative cup	H59		15	Screw	SUS 316	
5	Two stage cup	H59		16	Flat gasket	NBR	
6	Cartridge	35mm	CRT006*	17	Cabriole	SUS 304	
7	Faucet body	Brass		18	Shower seat	ABS	SMD007*
8	Handle	Brass		19	Connector	ABS	
9	Connect	SUS 304		20	Shower hose	SUS 304	FLX010*
10	Aerator	ABS/M24X1mm	SAT-AIR019*	21	Shower hand	ABS	MDR001*
11	Lift rod	SUS 304					

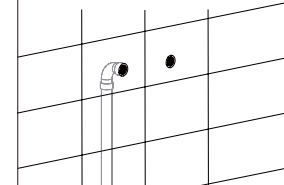
* CONSULTAR PARA ACABADOS DE COLOR

Installing instruction

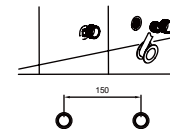
Before installing this product, an installation groove needs to be excavated on the wall.
(1) Select a suitable installation location in the bathroom.
(2) Slot according to the diagram.
(3) Install the inlet pipe (hot water on the left, cold water on the right).



(4) Lay ceramic tiles.
(5) The water outlet is slightly lower than the tile surface.



(6) Install the curved foot (wrap the raw material tape around the thread).



(7) Install the curved foot cup.



(8) Install the main body.



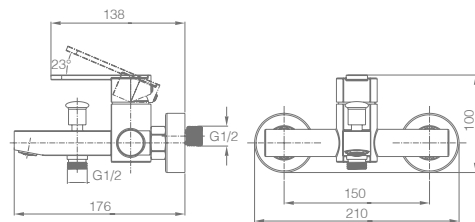
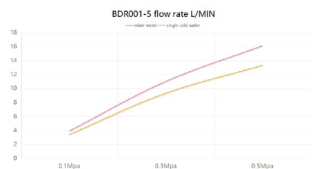
After locking, check for any leaks

(8) Main accessories.



FLOW RATE

Details	
FLOW RATE REF	BDAR025
hand shower mixer water 0.1Mpa(L/MIN)	4.2
hand shower mixer water 0.3Mpa(L/MIN)	11.3
hand shower mixer water 0.5Mpa(L/MIN)	17
hand shower singer cold water 0.1Mpa(L/MIN)	3.6
hand shower singer cold water 0.3Mpa(L/MIN)	9.5
hand shower singer cold water 0.5Mpa(L/MIN)	13.7
bath mixer water0.1Mpa(L/MIN)	5.5
bath mixer water0.3Mpa(L/MIN)	13.5
bath mixer water0.5Mpa(L/MIN)	18.8
bath single cold water0.1Mpa(L/MIN)	4.3
bath single cold water0.3Mpa(L/MIN)	11
bath single cold water0.5Mpa(L/MIN)	14.8



Product sizes (cm)	42.5*13.3*90
Weight (kg)	0.935
Guarantee	5 years
Max Preassure (bar)	5
Min Preassure (bar)	0.5
Optimum preassure (bar)	1-4 (Recommended 3)
Max. temperature	85°C
Min temperature	65°C

CERTIFIES

That all our products, provided that they are used in normal conditions or installed in accordance with current standards, are guaranteed against any manufacturing defect for a period of five years, except for products purchased before January 1, 2020, which will have the mand atory coverage of 2 years from the date of invoice.

Requirements and exclusions

Failure to comply with the instructions for assembly, use and maintenance of our products on the packaging and in our catalogue and published on our website: www.imexproducts.es, releases IMEX PRODUCTS, S.L. from any liability.

In any case, the acceptance of the defect by our technical department is necessary. In addition, transport costs will be charged only in the event that on IMEX PRODUCTS, S.L. technician determines the proper functioning of our products.

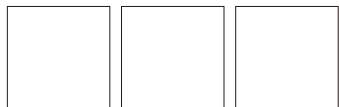
IMEX PRODUCTS, S.L. will decide to repair the product or replace it. It will be necessary to present the purchase invoice.

Assembly, maintenance or repairs carried out by non-specoalists re excluded from the warranty.

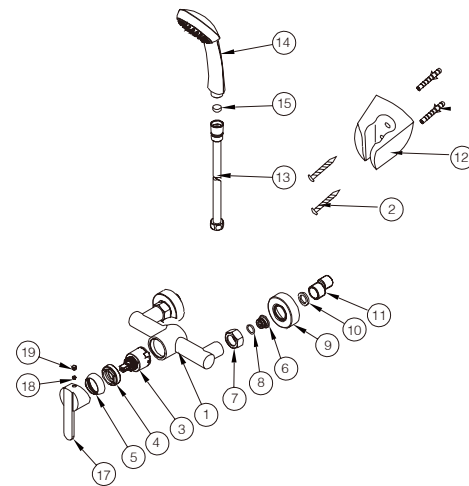
Wearing parts such as hoses, handles, seals, filters, aerators, etc. are not covered by the warranty.



**PRODUCT
INFORMATION
SUMMARY**



Ref.	EAN	Finish
BDR001-5	8435668005524	Chrome
BDR001-5NG	8435668034487	Matte black
BDR001-5OC	8435668034494	Brushed gold
BDR001-5ORC	8435668034500	Brushed rose gold

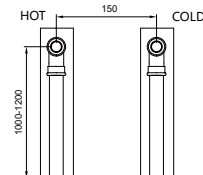


CODE	NAME	MATERIAL	REF	CODE	NAME	MATERIAL	REF
1	body	ABS		12	Shower seat	SUS 304	SMD007*
2	Screw	SUS 304		13	Shower hose	H59	FLX002*
3	Cartridge	35mm	CRT006*	14	Shower hand	SUS 304	MDR001*
4	Two stage cup	H59		15	Ring	SUS 316	
5	Decorative cup	H59		16	Flat gasket	NBR	
6	Screw	Brass		17	Handle	Zinc	
7	Nut	H59		18	Screw	ABS	
8	Ring	SUS 304		19	Button	ABS	
9	Cover	SUS 304					
10	Ring	SUS 304					
11	Cabrio leg	SUS 304					

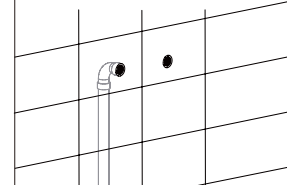
* CONSULTAR PARA ACABADOS DE COLOR

Installing instruction

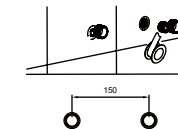
Before installing this product, an installation groove needs to be excavated on the wall.
 (1) Select a suitable installation location in the bathroom.
 (2) Slot according to the diagram.
 (3) Install the inlet pipe (hot water on the left, cold water on the right).



(4) Lay ceramic tiles.
 (5) The water outlet is slightly lower than the tile surface.



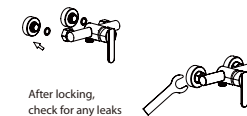
(6) Install the curved foot (wrap the raw material tape around the thread).



(7) Install the curved foot cup.



(8) Install the main body.

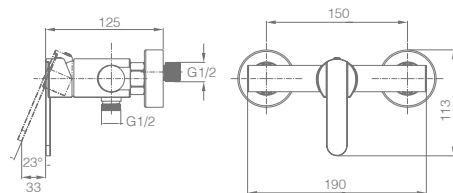
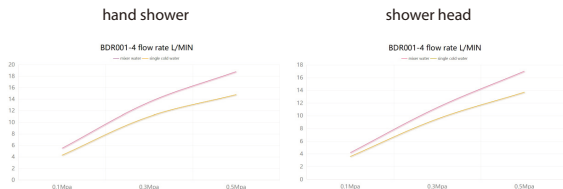


(8) Main accessories.



FLOW RATE

Detalles	
FLOW RATE REF	BDAR025
hand shower mixer water 0.1Mpa(L/MIN)	4.2
hand shower mixer water 0.3Mpa(L/MIN)	11.3
hand shower mixer water 0.5Mpa(L/MIN)	17
hand shower singer cold water 0.1Mpa(L/MIN)	3.6
hand shower singer cold water 0.3Mpa(L/MIN)	9.5
hand shower singer cold water 0.5Mpa(L/MIN)	13.7
bath mixer water0.1Mpa(L/MIN)	5.5
bath mixer water0.3Mpa(L/MIN)	13.5
bath mixer water0.5Mpa(L/MIN)	18.8
bath single cold water0.1Mpa(L/MIN)	4.3
bath single cold water0.3Mpa(L/MIN)	11
bath single cold water0.5Mpa(L/MIN)	14.8



Product sizes (cm)	42.5*13.3*90
Weight (kg)	0.935
Guarantee	5 years
Max Preassure (bar)	5
Min Preassure (bar)	0.5
Optimum preassure (bar)	1-4 (Recommended 3)
Max. temperature	85°C
Min temperature	65°C

CERTIFIES

That all our products, provided that they are used in normal conditions or installed in accordance with current standards, are guaranteed against any manufacturing defect for a period of five years, except for products purchased before January 1, 2020, which will have the mand atory coverage of 2 years from the date of invoice.

Requirements and exclusions

Failure to comply with the instructions for assembly, use and maintenance of our products on the packaging and in our catalogue and published on our website: www.imexproducts.es, releases IMEX PRODUCTS, S.L. from any liability.

In any case, the acceptance of the defect by our technical department is necessary. In addition, transport costs will be charged only in the event that on IMEX PRODUCTS, S.L. technician determines the proper functioning of our products.

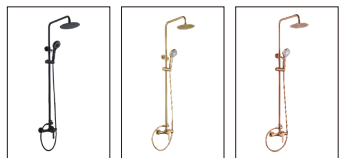
IMEX PRODUCTS, S.L. will decide to repair the product or replace it. It will be necessary to present the purchase invoice.

Assembly, maintenance or repairs carried out by non-specoalists re excluded from the warranty.

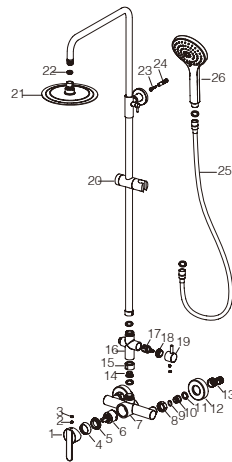
Wearing parts such as hoses, handles, seals, filters, aerators, etc. are not covered by the warranty.



**PRODUCT
INFORMATION
SUMMARY**



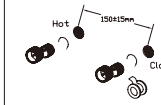
Ref.	EAN	Finish
BDR001	8435668002240	Chrome
BDR001/NG	8435668002264	Matte black
BDR001/OC	8435668034357	Brushed gold
BDR001/ORC	8435668034364	Brushed rose gold



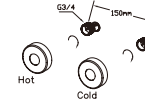
CODE	NAME	MATERIAL	REF	CODE	NAME	MATERIAL	REF
1	Handle	Zinc		20	Pipe	SUS 304	RR0014*
2	Screw	SUS 304		21	Shower head	SUS 304	RDN001*
3	Button	ABS		22	Rubber washer	NBR	
4	Decorative cover	ABS		23	Screw	SUS 304	
5	Nut	Brass		24	Expansion bolt	PA	
6	Cartridge	35mm	CRT006*	25	Hose	SUS 304/PVC	FLX002*
7	Body	Brass		26	Shower hand	ABS	MDR001*
8	Nut	Brass					
9	O-ring	NBR					
10	Valve	SUS 304					
11	Rubber washer	NBR					
12	Cover	SUS 304					
13	Cabrio leg	SUS 304					
14	Connect	SUS 304					
15	Nut	Brass					
16	Body	Brass	RR0002*				
17	Cartridge	22mm					
18	Nut	Brass					
19	Handle	Zinc					

* CONSULTAR PARA ACABADOS DE COLOR

Installing instruction



Step 1. Connect curved leg with the inlet pipe inside the wall



Step 2. Connect decorative cover to curved leg



Step 3. Install shower faucet properly and connect to curved leg on the wall



Step 4. Install shower pipe according to the distance of fix part

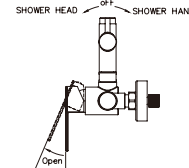
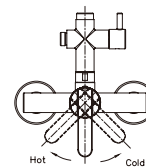


Step 5. Install shower hand and shower head to the set



Step 6. Test function of shower set, clean the set

Usage function instruction

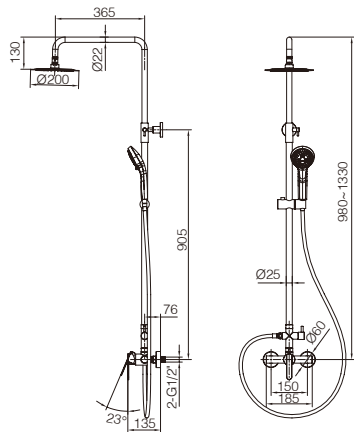
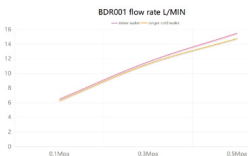
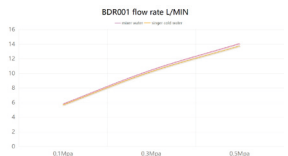


FLOW RATE

Detalles	
FLOW RATE REF	BDR001
hand shower mixer water 0.1Mpa(L/MIN)	5.81
hand shower mixer water 0.3Mpa(L/MIN)	10.46
hand shower mixer water 0.5Mpa(L/MIN)	14.08
hand shower singer cold water 0.1Mpa(L/MIN)	5.68
hand shower singer cold water 0.3Mpa(L/MIN)	10.23
hand shower singer cold water 0.5Mpa(L/MIN)	13.75
shower head mixer water 0.1Mpa(L/MIN)	6.49
shower head mixer water 0.3Mpa(L/MIN)	11.59
shower head mixer water 0.5Mpa(L/MIN)	15.49
shower head singer cold water 0.1Mpa(L/MIN)	6.28
shower head singer cold water 0.3Mpa(L/MIN)	11.29
shower head singer cold water 0.5Mpa(L/MIN)	14.76

hand shower

shower head



Product sizes (cm)	42.5*13.3*90
Weight (kg)	5.2
Guarantee	5 years
Max Preassure (bar)	5
Min Preassure (bar)	0.5
Optimum preassure (bar)	1-4 (Recommended 3)
Max. temperature	85°C
Min temperature	65°C

CERTIFIES

That all our products, provided that they are used in normal conditions or installed in accordance with current standards, are guaranteed against any manufacturing defect for a period of five years, except for products purchased before January 1, 2020, which will have the mand atory coverage of 2 years from the date of invoice.

Requirements and exclusions

Failure to comply with the instructions for assembly, use and maintenance of our products on the packaging and in our catalogue and published on our website: www.imexproducts.es, releases IMEX PRODUCTS, S.L. from any liability.

In any case, the acceptance of the defect by our technical department is necessary. In addition, transport costs will be charged only in the event that on IMEX PRODUCTS, S.L. technician determines the proper functioning of our products.

IMEX PRODUCTS, S.L. will decide to repair the product or replace it. It will be necessary to present the purchase invoice.

Assembly, maintenance or repairs carried out by non-specoalists re excluded from the warranty.

Wearing parts such as hoses, handles, seals, filters, aerators, etc. are not covered by the warranty.

